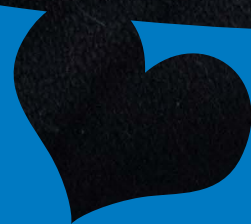




2024-2025

YEAR IN REVIEW

Te Rōpū Aukati Tūkino Kararehe



“To our incredible supporters – thank you! By working together, we have helped over 55,000 animals this year. By combining our different strengths, we have created something far greater, building a world where every animal receives the care and respect they deserve. Think Animal Welfare – Think SPCA.”

— David Broderick, SPCA Board Chair



SPCA BOARD:

- David Broderick
Board Chair
- Jane Holland
- Jennifer McGowan
- Julie Sellar
- Lizzy Ryley
- Gina Mills
- Hannah Larsen
- Colin Dawson
- Andrew Taylor

SPCA SENIOR LEADERSHIP TEAM:

- Todd Westwood
Chief Executive Officer
- Jason Copus
Chief Financial Officer
- Dr Arnja Dale
Chief Scientific Officer
- Dr Corey Regnerus-Kell
GM - Animal Services
- Julia van de Coolwijk
GM - Engagement
- Liz Andrews
GM - People, Culture & Safety
- Cathy Crichton
GM - Retail
- Jamie Baldock
GM - Business Improvement



SPCA Financial Statements
can be found at www.spcan.z

Contents

The Chair’s report	5
The CEO’s report	6
2024-2025 Impact report	8
01 Rescue, rehabilitate and rehome	
Caring for the animals of SPCA	11
Desexing: Reducing the number of vulnerable animals	12
Auckland Council pilot	13
Big West Coast desexing drive	13
02 Inspectorate and enforcement	
Seeking justice	15
Inspector ride-along with SPCA Ambassador Kim Crossman	16
Ferguson’s case	17
03 Education, community outreach and SPCA Certified	
SPCA’s work goes beyond rescue and shelter	19
Ambassadors: Famous champions of animal welfare	21
Community outreach: Supporting animals and people	22
Community support in action	23
SPCA Certified	24
04 Science and Advocacy	
SPCA’s advocacy work	27
Greyhound racing ban	28
Dog tethering reform: Break the Chain	28
National Cat Management Group	29
05 Supporter acknowledgements and finances	
Thank you!	31
A record-breaking day of giving	32
National Volunteer Awards	33
Retail and Op Shops	34
Legacy giving and partnerships	35
Legacies: Supporting SPCA	36
Grant funders and trusts	38
Partners and sponsors	39
People and performance	40
06 Get involved	
Animal welfare made possible	43
Turning waste into comfort	43
Capital improvements	44
Volunteering and fostering: Join the SPCA family	45



The Chair's report

Thank you for reading SPCA's Year in Review for the 2024-2025 financial year. This report summarises the amazing work our SPCA teams and supporters do to help improve animal welfare in New Zealand.

As Chair of the Board, I am proud to see how SPCA has maintained its commitment to transparency, accountability and long-term resilience throughout 2024-2025. Our role as the Board of New Zealand's largest and oldest animal welfare charity has been to ensure that governance supports both present needs and future aspirations.

In the last year we have farewelled two of our Board members: David Heald who joined in February 2022 and left in December 2024, and Steve Merchant who was a member from December 2019 to February 2025. On behalf of the Board, I want to thank them both for their service. SPCA is a stronger charity because of their hard work and input. We are welcoming four new Board members:

Hannah Larsen, who has a PhD in Animal Welfare Science. Hannah has worked in various applied animal welfare science and governance roles across Australia and New Zealand. Hannah is passionate about improving the lives of animals through evidence-based decision making, is a member of welfare committees at Zoos Victoria and Wellington Zoo and is the Chair of the New Zealand Animal Welfare Science Network.

Andrew Taylor, who is an experienced business leader, a fully qualified chartered accountant and a Fellow of Chartered Accountants Australia and New Zealand. Andrew is currently a partner at EY specialising in providing transaction and corporate finance services to a diverse range of companies in New Zealand, both private and public. Andrew is also a Director for EY in respect of the firm's governance arrangements in NZ.

Gina Mills, who is Head of Leadership and Culture at Southern Cross Health Society, and is a Chartered Member of the Institute of Directors and a Fellow of the Institute of Chartered Accountants in England & Wales. Gina is committed to building high-performing, inclusive workplaces where people can belong, perform

and thrive. She has a background in organisational development, business transformation, change management, strategy execution and finance from her 20+ years working in professional services.

Colin Dawson, who is a Chartered Fellow of the NZ Institute of Directors. He has had a career in veterinary clinical practice, and has been a senior executive in primary, secondary and aged healthcare management, consulting and has completed research in commercialisation and venture capital work. He is currently on the Boards of MARS Bioimaging and Luminoma. His previous Director roles were with Pacific Edge Biotechnology, BLIS Technologies, NZEPA, Landcare Research, Plant and Food Research and Ember Wellbeing Trust.

I am looking forward to working with our new Board members who will continue to support SPCA's financial and operational sustainability. This was a focus in the last year, especially as New Zealanders are still experiencing economic and social pressures – which in turn drives up demand for our services as people struggle to care for, feed and desex their pets.

As a result, the Board has paid special attention to evolving risks, ensuring that governance frameworks align with our strategic purpose, and upholding our responsibility for the health and safety of our animals and people.

I extend my gratitude to our employees, volunteers, fosterers and supporters. Your dedication, ranging from care, rescue and advocacy to retail, fundraising and education, ensures SPCA can care for the 55,000+ sick, injured, neglected, abused or vulnerable animals we helped this year, and the thousands more we'll care for in the years ahead. We are building a kinder, stronger SPCA that is prepared for both today's demands and tomorrow's possibilities.

David Broderick, Board Chair, SPCA New Zealand



Creating Social Good: SPCA’s Annual Impact Across NZ

Every \$1 given to SPCA returns over \$10.50 in value

\$350.9m Adoptions improve lives	\$328.5m Preventing cruelty to animals and people	\$137.3m Volunteers gain skills and jobs
\$111.7m Desexing prevents suffering	\$35.2m Humane education creates kinder kids	\$9.6m Desexing supports biodiversity
\$8.6m Op Shops save people money	\$5.0m Free animal food	\$1.4m Desexing lowers aggression
\$0.9m Op Shops reduce landfill	\$0.1m Vaccinations protect public health	 Estimated Benefit: \$989.2 MILLION

Source: Infometrics - May 2025 SROI Report



The CEO’s report

It has been another busy 12 months for SPCA. Thank you for taking the time to read the highlights and achievements of the past financial year.

In 2024-2025, SPCA has continued to mobilise courage, kindness and collective effort to provide shelter, support, desexing, education and advocacy across New Zealand. We have ensured animals receive whole-hearted care, while also investing in future-ready infrastructure and programmes.

Across our network of Centres, Op Shops, Inspectorate teams, Advocacy and community outreach programmes, our commitment to animal welfare has never faltered. This year, despite financial challenges and increased service demand, our teams delivered compassionate care to 27,630 animals (the total number that came into our Centres).

I am also pleased to share an early look at SPCA’s Social Good (SROI) Report, to be officially released in the next financial year. This report, conducted independently by Infometrics, shows that SPCA generates an extraordinary \$989.2 million of value annually – that’s \$10.50 in social, economic and environmental benefit for every \$1 donated to and invested in SPCA. This impact goes well beyond the welfare of animals; it encompasses better human mental health, stronger community bonds, reduced violence, enhanced biodiversity and more resilient environments.

This upcoming report emphasises what we have always known – that protecting animals has the potential to positively impact every New Zealander’s life. It is a testament to the generosity of our donors, the dedication of our volunteers, the work of our teams and the trust of our communities.

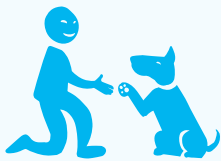
Behind these impressive economic figures are real animals whose lives we’ve touched. In 2024-2025, SPCA directly impacted over 55,000 animals through rescue, care, adoption and our desexing programmes. We prevented an estimated 128,429 unwanted kittens and puppies from being born by facilitating 34,332 desexing procedures and responded to 14,379 cruelty complaints – all contributing to a more humane New Zealand for animals.

Thank you to everyone who helps us to bring care, hope and connection into the lives of animals and people alike. We could not do this without you.

Todd Westwood, Chief Executive Officer, SPCA New Zealand

SPCA Impact report 2024 - 2025

PROTECT & SEEK JUSTICE



14,379
cruelty complaints received

6,409
ambulance jobs recorded

3,700+
animals taken into care by
Inspectors

55
prosecution charges filed in court

3,407
education outcomes and warnings
issued

3,664
Inspectorate jobs resulting in
verbal advice and assistance

22
species of animals at jobs
attended, ranging from alpacas to
reptiles

RESCUE, REHABILITATE & REHOME



27,630
total incoming



Average of **35%**
animals in foster homes
each month



15,479
animals adopted

ADVOCATE



55
submissions on
animal welfare issues
in the last year



8
expert and informal
opinions written for
cruelty investigations



175
stakeholder meetings
attended to advocate
for and advance animal
welfare

EDUCATE



1,350
children attended
our live webinars

1,260
schools using the SPCA
Teachers' Portal

63,883
Kids' Portal sessions

5,293
views of SPCA Kids' animal care
and welfare videos (with a total
of 186 hours watched)

4,489
downloads of our Kind Matters
Newsletter

SPCA CERTIFIED



Over **70 million**
farmed animals benefitting from a
higher standard of care



Over **490 audits**
of SPCA Certified facilities in the last
year



VOLUNTEERS & FOSTERS



4,023
Volunteers



3,302
Fosterers



7,325
Total



DESEXING



34,332
total animals desexed across
all programmes



14,596
animals desexed in SPCA
Centres



19,736
animals desexed through our
National Desexing Programme*

**including Snip 'n' Chip, community desexing and vet
partnerships*

National Desexing Programme breakdown:

1,139
animals desexed through our SPCA Desexing Grant.
We are now directly administering this grant, moving
to a single annual funding round to provide greater
impact and more streamlined support. Opening
the grant up to both registered and non-registered
charities will enable us to reach further into the
community.

7,952
cats desexed through Snip 'n' Chip

10,645
animals desexed through community desexing and
other desexing activities

128,429
estimated unwanted kittens and puppies prevented



Chapter 1

Rescue, rehabilitate and rehome

Caring for the animals of SPCA

Every day, SPCA teams across New Zealand care for animals who are sick, injured, neglected, abused, or vulnerable. These are the animals who need us most – souls who have no one else to turn to. Our role is to provide safety, veterinary care and a pathway to a better life.

This year, thousands of animals found comfort and care through our rescue, shelter, veterinary and adoption services. SPCA Animal Welfare Inspectors, Inspectorate Support Officers, Community Support Officers and Animal Services teams are at work every day ensuring the protection of New Zealand’s animals. They are the first people called on to help when animals have been the victim of deliberate cruelty or neglect, or are injured or vulnerable. They cover the whole country, from Cape Reinga to Bluff.

Over the past year, we have also run adoption campaigns, including our Walk-in Caturdays for felines, our Clear the Shelters campaign for long-stay animals, and our Meet Your Match campaign where we helped individuals find the perfect animal for them. These campaigns helped **15,479** deserving animals find loving homes.

No matter the adoption campaign, we ensure that each animal is matched with the right home. An individual’s lifestyle, property and experience with animals are all key factors that are considered before an adoption is approved.

Many of our long-stay residents also found their forever homes through a dedicated Special Love Needed campaign, proving there’s someone out there for every adoptable animal..

“We came in just to look, but the moment we met Luna, we knew she was meant to be part of our family. She’d had a rough start, but the love and care she received at SPCA made all the difference. Now she’s the heart of our home.”

— Emma, adopter from Walk-in Caturdays



Some of our most memorable moments came from animals who overcame incredible odds:

-  **Elliot**, a tiny kitten rescued from a garden shed with his littermates, faced terrible health challenges but survived thanks to SPCA’s care. Now fully recovered, he enjoys an adventurous life with his adoptive family, even joining them on safe outdoor hikes.
-  **Mini and Mo**, two dogs rescued by our Inspectorate, were terrified and unsocialised. They had a long journey to recovery at our Napier and Hastings Centres before being rehomed together.
-  **Phoebe**, a two-week-old kitten found alone in a bush and missing a paw, didn’t let life’s setbacks stop her from fighting for survival. Upon her arrival at our Palmerston North Centre, the team quickly got to work providing her with the care she desperately needed. Phoebe was a “foster fail,” fitting seamlessly into her new family.

These stories remind us that with time, care and compassion, vulnerable animals can have a chance at finding the love they deserve.





Desexing: Reducing the number of vulnerable animals

Desexing is critical to reducing the number of vulnerable animals in our communities. In 2024-2025, SPCA desexed **34,332** animals. Of that total number, **19,736** were desexed through our National Desexing Programme and **14,596** were desexed in the care of our Centres.

These numbers reflect the scale of our work and the impact of initiatives like **Snip 'n' Chip**, desexing completed by our **Veterinary Partnerships** and other community partnerships.

After last year's successful trip to the Far North, our SPCA Mobile Desexing Clinic completed its first campaign in the South Island as part of a comprehensive desexing initiative on the West Coast. The vehicle reached remote communities where access to veterinary care is limited. In Northland, we teamed up once again with Bay of Islands Veterinary Services and Coast to Coast Cat Rescue to offer free desexing and microchipping to pet owners who needed support.

Auckland Council pilot

In partnership with Auckland Council, SPCA rolled out a pilot programme to tackle the city's roaming dog crisis. Free dog desexing services were offered in high-need communities, helping reduce stray populations and improving public safety.

This initiative showed what's possible when organisations work together to solve complex challenges, and it's already being looked at as an option in other areas.



Big West Coast desexing drive

This year, SPCA launched a major desexing campaign on the West Coast, focusing on areas with limited access to veterinary services.

Working with local vets and community groups, we desexed **98** animals in one town alone, preventing an estimated 355 unwanted puppies and kittens in Westport. We know this will significantly improve animal welfare in the area.

The campaign was carefully tracked and verified through veterinary invoices and spreadsheets, ensuring transparency and accountability. It's a model we replicate in other regions such as the East Coast.



Chapter 2

Inspectorate and enforcement

Seeking justice

SPCA's Inspectorate team respond nationally to reports of animals suffering from cruelty and neglect. The settings encountered by our team are wide-ranging and often include very confronting situations where animals are in pain, distress or otherwise in need of help. Our Inspectors are trained to attend these callouts and use their statutory powers to ensure animals receive the care they need.

SPCA is the only charity in New Zealand with the legal powers to help animals in need and bring animal offenders to justice. Our Inspectors are appointed by the Ministry of Primary Industries (MPI) under the Animal Welfare Act 1999.

Last financial year, our Inspectors received 14,379 animal welfare complaints across New Zealand. From dogs left chained and starving to animals on lifestyle blocks kept in appalling conditions, each case was a reminder of the importance of education and compassion.

We are often asked why some individuals are prosecuted, while others are not. The answer lies in the fact that each case will have unique circumstances. In many cases, we can achieve better outcomes through education, support and monitoring than we can through the criminal justice process. By providing animal owners with guidance and instruction, our Inspectors often give people the information they need to make improvements to their standards of care, leading to better long-term outcomes for the animals.

If the situation has led to a better outcome for the animal and positive change has been achieved, our Inspectors may take no further action. However, if there's no improvement, they will escalate their response. This could include issuing written warnings or infringements. Sometimes, a more tailored approach is needed, such as step-by-step instructions that owners are legally required to follow, compliance notices or civil orders that can restrict animal numbers, and/or require a person to take specific action to prevent the future suffering of animals.

However, education is not always effective, possible or appropriate. In cases involving deliberate cruelty, serious neglect or when an individual refuses to engage or is a repeat offender, a more formal response may be necessary, which involves criminal charges being filed (prosecution).

An SPCA Inspector has legal powers to enter onto properties (not dwellings or maraes), vehicles, aircrafts, or boats to inspect animals.

They can take photographs and videos, make enquiries and gather evidence to prepare a case file. This may include executing search warrants, speaking to and taking statements from witnesses, collecting evidence (such as photographs, CCTV or videos), and seeking advice from experts such as vets.

Where evidence of breaches against the Animal Welfare Act 1999 are found, and any other form of intervention has been ineffective or is not appropriate, a criminal charge may hold the person accountable for the harm they have caused to an animal or animals.

Often in our investigations, our Inspectors work with other organisations such as the Police, Animal Control, the Ministry for Primary Industries and the Department of Conservation to achieve the best outcome for an animal.



Inspector ride-along with SPCA Ambassador Kim Crossman

To shed light on the realities of Inspectorate work, SPCA welcomed with Kim Crossman for a ride-along experience. The day included visits to properties under investigation, welfare checks and conversations with Inspectors about the emotional toll of the job.

Kim's reflections, shared on her social media channels, helped raise public awareness

about the complexity and compassion behind every call-out. It's not just about enforcing the law – it's about making sure animals are safe and supported.

“Every case is different, but what stays the same is the drive to do what's right for the animal. Sometimes that means tough decisions, but it always means doing our best.”

— SPCA Inspector



Ferguson's case

One of our most heartbreaking cases this year involved Ferguson, a female American Pitbull Terrier cross who was found chained to a tree in Māngere East. Her chain was tangled around the tree and her neck, leaving her unable to reach shelter or water. Despite multiple bowls nearby, all were empty. Ferguson had fly-bitten ears, poor body condition and was suffering from fear, anxiety and stress^[1].

SPCA Inspectors removed Ferguson from the property and initiated a prosecution. The owner pleaded guilty to two charges in the Manukau District Court and was fined. Sadly, due to the extent of Ferguson's trauma and ongoing behavioural challenges, the decision was made to humanely euthanise her to end her suffering.

“Life-chained dogs like poor Ferguson suffer more than physical wounds. It's the mental trauma which is harder to heal.”

— Todd Westwood, SPCA Chief Executive Officer

1. Woman pleads guilty to keeping dog chained without water and ... - SPCA

Our work in numbers

14,379

cruelty complaints

55

prosecution charges filed in court

3,664

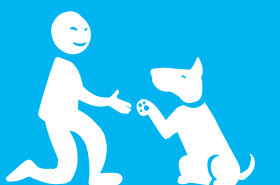
cases resulting in verbal advice

3,407

education outcomes and warnings issued

6,409

ambulance jobs



Education, community outreach and SPCA Certified



SPCA’s work goes beyond rescue and shelter

It’s also about the prevention of cruelty through education, and empowering people to make kinder choices for animals. Through our Education Programme for schools, Community Outreach activities and SPCA Certified, we’re helping to shape a future where animals are treated with empathy and respect in homes, communities, classrooms, farms or companion animal services, like dog daycares.

Our Education Programme continues to grow, reaching thousands of children and about 1,000 schools across Aotearoa. From early learning centres to primary and intermediate schools (Year 0-8), our free resources are designed to nurture empathy, compassion, and critical thinking, while developing a connection and sense of responsibility for animals. They align with the New Zealand Curriculum, and are created by qualified educators to support real-life, meaningful life-long learning.

This year, we delivered:

- **Learning-at-home booklets** focused on companion animals, farmed animals and animals in the wild.
- **Live webinars** exploring the Five Domains model for animal welfare, animal sentience and the importance of enrichment.
- **Circle time resources** with songs, puppet shows and storytelling to support empathy and social-emotional knowledge and skills.
- **Instructional readers**, including *Gannets and*

Grommets, read aloud by SPCA Ambassador Suzy Cato. We also had two series translated into Mandarin Chinese.

- **Engaging competitions**, including our Kind Matters Kids Newsletter Colouring and Photography competitions, encouraging children to reflect on plastic pollution, animal wellbeing and environmental care.
- **New single-session lessons** on topics like dog walking routes, wildlife soundscapes, school gardens and emergency preparedness.
- **Special topic resources** for ANZAC Day, Samoan Language Week, Tongan Language Week, SPCA Cupcake Day and Seaweed.
- **Maths week activities** including budgeting for pet care and problem-solving tasks.
- **Conscious cooking unit plans** linking food choices to animal welfare and sustainability.
- **Environmental unit plans** exploring habitat protection, biodiversity and kind conservation.



At Wood Hatton Playcentre, children became “vets for the day” using SPCA’s dramatic play kit. They brought in their toy animals, filled out examination forms and role-played check-ups and treatments.

“Tamariki especially enjoyed the roleplay and storytelling of what was wrong with their animals. There were lots of kōrero around injections, which reflects the knowledge they have of medical care.”

— Hannah, kaiako at Wood Hatton Playcentre



SPCA's Education team connected with young learners, educators and whānau, delivering 35 live education webinars to over 1,350 young learners across the motu. Through competitions and giveaways, SPCA celebrated tamariki, their learning and their creativity.

“Thank you so much, the children were excited to be able to do this today. The children have loved this and have learnt so much.”

— Year 4 teacher, St Michael's School
(after a live webinar)

At Shelly Park School, Year 5 and 6 students completed a persuasive writing unit focused on animals in need of loving homes. After exploring SPCA Māngere's adoption listings, they wrote heartfelt pieces encouraging others to adopt.

“It was inspiring to see students connect with real animals and use their voices to advocate for them.”

— Laura Tomlinson, Teacher

Our work in numbers

45,445

visits to SPCA Kids' Portal and 11,375 resources downloaded

5,293 views

of SPCA Kids' animal care and welfare videos (with a total of 186 hours watched)

11,375 resources

downloaded from SPCA Teachers' Portal – Resources for Schools

1,260 Schools (Year 0-8)

engaged with SPCA Teacher Portal – Resources for Schools

1,350 young learners

attended 35 live webinars



Ambassadors: Famous champions of animal welfare

SPCA is proud to partner with a group of passionate Ambassadors who use their public platforms to raise awareness, funds and support for animals in need. These individuals come from diverse backgrounds but share a commitment to SPCA's values. In the last year we were very proud to welcome two new Ambassadors to the SPCA family – Suzanne Paul and Debbie Hockley.

- **Suzy Cato**
A beloved children's entertainer, Suzy educates kids about kindness to animals through storytelling and her YouTube series *Suzy's Book Corner*.
- **Suzanne Paul**
A TV personality and animal advocate, Suzanne champions senior dog adoption and has raised awareness and funds through her public appearances.
- **Debbie Hockley**
A former White Ferns cricketer and SPCA volunteer, Debbie supports SPCA through hands-on work at the Christchurch Centre and DIY projects to improve animal spaces.

- **Karen Walker**
A fashion designer and lifelong supporter, Karen has made SPCA her company's charity of choice and continues to advocate for animals through events and campaigns.
- **Kimberley Crossman**
An actor and host, Kimberley brings energy and compassion to her role, helping promote adoption and animal welfare across New Zealand and abroad.
- **Chris Lynch**
A trusted name in Canterbury local news, Chris, a loyal SPCA supporter for many years, hosts a regular animal video segment filmed on location at our Christchurch Centre.
- **Honor Carter**
A former New Zealand Hockey Black Stick, Honor and her family (including their Swedish Vallhund dog, Herbie) lend their support to our campaigns.

Our Ambassadors help SPCA connect with New Zealanders throughout the country. They use their networks and platforms to make a difference for animal welfare, for which we are incredibly grateful.



Community outreach: Supporting animals and people

In 2024–2025, SPCA introduced a new role to strengthen our connection with communities: the **Community Support Officer (CSO)**. These officers work directly with individuals and families who may be struggling to care for their animals, offering practical support, education and resources to help keep animals safe and well in their homes.

CSOs are often the first point of contact in situations where animals are at risk, not because of cruelty, but because of hardship. They help bridge the gap between prevention and enforcement, working alongside our Inspectorate and Centre teams to provide early intervention and support.

From delivering food parcels and flea treatments to helping arrange desexing or transport to vet appointments, CSOs are making a tangible difference in the lives of animals and their guardians.



Community support in action

Community Support Officer Karen Hacking is bridging the Gap in Hastings, Napier and the wider Hawke’s Bay area.

Karen Hacking’s work as a Community Support Officer (CSO) is a great example of SPCA’s commitment to compassionate, community-based animal welfare. Her role is dynamic and people-based, supporting animals and their owners through education, practical help and care.

In Hastings, Karen responds to urgent needs such as desexing, food donations and disease prevention. She distributes desexing vouchers and provides transport for those unable to get their animals to a vet. Her work also includes trapping sick or injured unsocialised cats and feral cats, which have become a growing problem in the community.

Karen’s approach is grounded in empathy. She takes time to explain her role and reassure people that SPCA is there to help, not judge. Her background from working in the Courts has provided her with the skills to navigate complex situations, including working with gang-affiliated youth and individuals experiencing challenges. She’s had to support people in moments when they are feeling vulnerable.

Her support for SPCA Centres is hands-on and wide-ranging, including coordinating volunteers, transporting animals and managing community queries. She provides a link between SPCA and the community, helping support relationships with vets, councils and other organisations.

Karen’s CSO outreach includes school visits, community talks and public events. She uses SPCA’s education resources to engage learners of all ages, sharing knowledge about animal care, safety and welfare. Whether she’s speaking at a kindergarten or presenting to a Rotary group, Karen brings warmth and clarity, which helps

people to better understand animal welfare.

“People ask for me by name when they come into the Centre,” says Karen. “They know I’ll do what I can to help.”

She’s proud to be part of SPCA and to fill a gap. Her work takes pressure off Inspectors and Centres, helps ensure that animals receive care and prevents their situations from deteriorating.

Karen’s days are filled with moments of heartbreak and joy, from helping neglected dogs find loving homes to supporting people recovering from the impact of weather events. She regularly shares stories on local radio to promote adoption and celebrate the resilience of animals and the people who care for them.

Her story is a reminder that animal welfare is also about people – and that compassion, connection, and care can change lives. This approach reflects SPCA’s commitment to compassionate, community-based animal welfare, meeting people where they are and helping them do the best they can for the animals in their care.





SPCA Certified

In the last financial year, SPCA Certified has continued to improve farmed and companion animal welfare standards. The programme is now in its 25th year. To ensure that consumers can trust products that carry the highly regarded SPCA Certified logo, independent audits (both announced and unannounced) are required of our members annually.

SPCA Certified standards are derived from the Five Domains model of animal welfare and go beyond minimum legal requirements, focusing on positive animal welfare outcomes. For example, chicken farms certified under SPCA Certified standards must provide:

- Improved lighting and air quality, more space, and good quality, friable litter conditions.
- Enrichments, such as pecking items and bales to encourage activity and exploration.
- Perches to promote perching behaviours and increased activity.

- Daily access to outdoor range areas that include specific shelter and shade requirements (for free-range chickens).

New Zealand has millions of farmed animals, including dairy and beef herds, sheep and chickens. SPCA Certified farms represent an increasingly meaningful portion of this production. Consumer interest and pressure to ensure all animals have the best possible life has helped drive growth in the programme.

The programme continues to grow, with new members joining, more animals benefiting from higher welfare standards and new food products for shoppers.

OUR MEMBERS



New members include:

- **Nando's New Zealand:** Joining in October 2024, Nando's became the first quick service restaurant in the SPCA Certified programme to commit to exclusively sourcing SPCA Certified free range chicken for its local operations.
- **Foodstuffs Pam's brand cage-free eggs:** Now SPCA Certified and available on shelves.
- **Tegel Foods:** Now 100 % SPCA Certified.

In the coming year, the SPCA Certified team will continue to work with the food sector, producers and the agricultural industry to support more members into the programme. We'll expand our engagement with consumers to drive greater understanding of welfare labels and what that means. SPCA Certified members share a commitment to continuous improvement through transparency, training, welfare metrics and follow-up visits.



Welcoming new SPCA Certified members

SPCA Certified is our animal welfare certification programme, designed to raise standards of care in farming and pet care industries. This year, we welcomed **Nando's New Zealand** to the programme, recognising their commitment to sourcing free-range chicken from farms that are SPCA Certified.

“When people choose SPCA Certified products and services, they're helping to raise standards of care for animals well beyond the minimum legal requirements.”

— Dr Arnja Dale, SPCA Chief Scientific Officer

Our work in numbers



70 million farmed animals benefit from a higher standard of care through SPCA Certified



Over 490 annual, unannounced and pre-certification Certified audits driving continuous improvements

Chapter 4

Science and Advocacy

SPCA’s advocacy work

SPCA’s advocacy work is about creating lasting change for animals, through legislation, public awareness, and collaboration.

This year, we continued to speak out on behalf of animals across New Zealand, working with government, industry and the public to improve animal welfare standards and close gaps in protection.

Change doesn’t happen overnight. It takes years of evidence gathering, public engagement and persistent advocacy to shift policy. But 2024-2025 was a year of progress. From a government announcement to ban greyhound racing to strengthening dog tethering regulations, we saw the results of long-term efforts come to life. All the while, we continue to push forward on other key issues, such as upholding the ban on live exports and updating very outdated Codes of Welfare for companion animals.

ADVOCACY HIGHLIGHTS

Advancing policy:

- **Live export ban:** The Government has so far delayed its plans to overturn the 2023 ban on live animal exports by sea – a delay which SPCA welcomes. SPCA has published two surveys canvassing public opinion about live exports and has made substantive submissions to the Ministry for Primary Industries (MPI) pre-engagement consultation on draft live export requirements.
- **Animal welfare codes:** We called for urgent updates to outdated Codes of Welfare for companion and farmed animals, and made submissions on proposed changes for sheep, beef cattle and deer.
- **Bylaws for cats:** This year we helped advance bylaws for cats to be desexed, microchipped and their microchip registered on the New Zealand Companion Animal Register (NZCAR) in Palmerston North, Tararua District, Tasman District, Nelson City and Porirua City.

Public engagement:

- **Community events:** We supported *Concert for Animals* on Guy Fawkes Night, a Radio New Zealand (RNZ) event designed to comfort animals during fireworks and raise awareness about noise-related stress.

- **Online learning:** We co-created and launched our free online course, *Introduction to Animal Welfare*, which provides accessible education to the public about key animal welfare concepts like the Five Domains model.

Political engagement:

- SPCA welcomed Minister Andrew Hoggard and Labour Spokesperson for Animal Welfare Rachel Boyack to our Māngere Centre to discuss key animal welfare issues and the importance of strong legislation. Following these visits, we delivered a policy briefing on regulating the breeding of dogs, and a second briefing outlining our recommendations for broader policy improvements to better protect dogs across Aotearoa.
- We met with MP Celia Wade Brown and MP Barbara Kuriger to provide advice and support for the Domestic Cat Microchipping Bill, which will require companion cats to be microchipped and registered on a national database. We have strongly advocated that desexing be included in this Member’s Bill.





Greyhound racing ban

After years of sustained advocacy, SPCA celebrated a landmark win in December 2024: the government announced their intent to ban commercial greyhound racing in New Zealand. This announcement followed years of independent reports, public pressure and advocacy collaboration with other animal protection organisations.

SPCA had long raised concerns about the welfare of racing greyhounds, including injuries, euthanasia rates and poor rehoming outcomes. A 2024 survey commissioned by SPCA showed overwhelming public support for ending the industry.

“This was the best Christmas present ever. The sport is inherently dangerous, as found by multiple reviews of the last few years. Whilst we appreciate the industry has made some improvements, it has completely lost its social licence. The injury rates are still too high. The deaths are unacceptable.”

— Dr Arnja Dale, SPCA Chief Scientific Officer

The 2024-2025 racing season ended with 16 fatalities and over 800 injuries. The end of racing will see an end to race-related injuries and deaths, and a brighter future for greyhounds as pets.

Dog tethering reform: Break the Chain

In another major step forward, the Government announced new regulations to address the long-term tethering of dogs – an issue SPCA has campaigned on for years. These new rules will set clear limits on which dogs can be tethered and under what conditions, helping to prevent the physical and psychological harm caused by life on a chain.

This reform is a direct outcome of SPCA’s work behind the scenes with MPI and Minister Hoggard, in combination with powerful backing from our supporters who wrote to the Minister during the Break the Chain campaign.

“We know these changes won’t solve every case overnight, but it’s a meaningful step forward. They will permit our Inspectors to intervene in situations where they couldn’t before. This also sends a loud message that long-term chaining of dogs is not acceptable in our society.”

— SPCA Science & Advocacy team



National Cat Management Group

In June 2025, SPCA joined fellow members of the National Cat Management Group (NCMG) to launch the third edition of its strategic report and a new website at Parliament. The NCMG was formed in 2014 to develop a national strategy for responsible, compassionate and humane cat management in New Zealand.

The group brings together a diverse coalition of organisations, including:

- Companion Animals New Zealand (CANZ)
- New Zealand Veterinary Association (NZVA)
- Companion Animal Veterinarians (CAV), a Branch of NZVA
- Predator Free New Zealand Trust
- SPCA New Zealand
- Veterinarians for Animal Welfare Aotearoa (VAWA)

The Department of Conservation (DOC) provides technical advice, and the Ministry for Primary Industries (MPI) is an observer member.

The event brought together diverse advocates in the cat management space representing cat welfare and protection, cat health, conservation, local council and government.

The launch event was co-hosted by MPs Celia Wade Brown (Greens), Barbara Kuriger (National) and Rachel Boyack (Labour), and highlighted the urgent need

for legislative reform – particularly support for the Domestic Cat Microchipping Bill, which would require all companion cats to be microchipped and registered on a national database.

The NCMG’s new website provides accessible information on cat management, links to member organisations and practical advice for councils, communities and cat guardians.

“For all the years we’ve been working together to protect cat welfare and reduce overpopulation, we haven’t had a central place to share our work. Now we do.”

— Dr Arnja Dale, NCMG Chair

Our work in numbers



55 submissions



8 expert and informal opinions written for cruelty investigations



175 stakeholder meetings attended to advocate and advance animal welfare

Chapter 5

Supporter acknowledgements and finances



Thank you!

SPCA’s work is only possible thanks to the generosity of our supporters, volunteers, partners and donors. Every dollar raised helps care for animals who are sick, injured, neglected, abused or vulnerable, and every act of kindness strengthens our ability to make a difference.

There’s a common misconception that SPCA is fully funded by the government. Government funding covers only 9 % of our annual operating costs, providing just \$6.6 million of the approximately \$74 million that it costs to run SPCA each year. Government funding is also specifically allocated to support the work of our Inspectorate team – SPCA pays all the remaining costs, including the cost of care for Inspectorate animals once they’re brought into our Centres.

Government support does not fund rescue, rehabilitation, rehoming, community outreach, desexing, education or advocacy – or any of the costs to run our Centres. The remainder of SPCA’s funding comes from donations, appeals, fundraising, events, sponsorships, peer-to-peer fundraising, grants, adoption fees and our Op Shops.

This year has been financially robust for our Op Shops, with \$22.1 million in sales, including a \$4.5 million profit. This is a brilliant outcome that directly supports our frontline services. With over 90 stores operating across the country (and still growing), our Op Shop retail arm continues to be an increasingly valuable source of both funding and community connection.



A record-breaking day of giving

In March 2025, New Zealanders came together to show their generosity and support for SPCA’s one-day matched giving campaign, raising an incredible \$373,476.83 in just 24 hours. With an initial matched funding pool of \$100,000 provided by Petdirect and generous individual donors, the goal was to reach \$200,000. But as momentum built throughout the day, additional donors stepped forward, increasing the matched pool to \$120,000 and lifting the target to \$240,000. By midnight, that target had been far surpassed, with people contributing through online, phone, mail and checkout donations.

The day far exceeded our expectations. The funds raised will directly support animal welfare, covering everything from medications and surgeries to food, bedding and enrichment while animals await adoption.

This campaign was a powerful reminder of what’s possible when people unite for a cause. SPCA extends heartfelt thanks to Petdirect, our donors who added further matched funds and every single person who donated or shared the campaign. Your support made this day one for the record books.



Retail and Op Shops

There are plans to increase the number of Op Shops in the next financial year to over 100 stores throughout New Zealand.

Demand is growing for sustainable and affordable clothing, footwear, homeware and everything in between. The cost of living crisis continues to bite, and we remain incredibly grateful to people who choose to donate and purchase items from our retail stores.

In the last year, we opened 11 new stores in exciting, high-value locations, while five were closed due to lease expiries. We also relocated three stores into fresh, larger spaces to better serve their communities.

Our Op Shops, typically staffed by just one or two paid team members, rely heavily on the support of volunteers, donors and shoppers who believe in giving second chances to both animals and pre-loved items.

SPCA is proud to offer opportunities for people to gain workplace skills and, for some, a stepping stone into paid employment.

Volunteers take on a wide variety of roles, including sorting, pricing, merchandising and selling items, as well as handling donations, cleaning and providing customer service. Some also contribute through driving, electrical testing and repairs or furniture reconditioning, all of which is valuable experience that can support their transition into the workforce. Volunteering is also a great way to meet new people and build local connections, especially for those new to an area or to New Zealand.

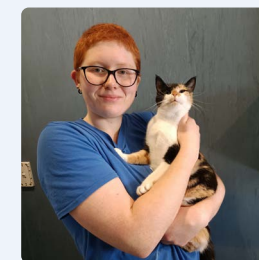
National Volunteer Awards

SPCA's volunteers are the heart of our organisation. This year, we proudly recognised six outstanding individuals and teams through our 2025 National Volunteer Awards:



Sensational Centre Team
Greymouth
Karen and Bill Potter

For over 12 years, Karen and Bill have been the backbone of the Greymouth Centre, volunteering every Wednesday in the feline areas and stepping up for transfers, emergencies, fostering and more. Their quiet dedication and warmth brightens every corner of the Centre.



Going the Extra Mile
Rotorua
Jaime Frew

Jaime's tireless support includes everything from cleaning air conditioning units to staying late for laundry and animal enrichment. Her reliability and work ethic make her an indispensable part of the Rotorua team.



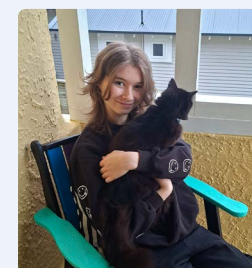
Fantastic Foster Family
Invercargill
John and Donna Stephenson

On their lifestyle block, John and Donna have created a haven for rescued animals – roosters, ducks, sheep, goats and more. Always available, always kind, they embody the spirit of fostering.



Outstanding Op Shop Team
Kaikōura
Genevieve, Bex, Claudine, Carolyn, Shirley, Tawa and Pudding

This dedicated team keeps the Kaikōura Op Shop running smoothly, embracing responsibility, training and teamwork. In a small town with limited retail options, their aroha makes a big impact.



Young Volunteer Award
Wellington
Skye Redwood

Skye balances school with volunteering in the puppy run, guiding new volunteers and stepping in whenever needed. Her quiet commitment and reliability make a lasting difference.



Devoted Volunteer Award
Christchurch
Carole Worley

Carole has been a rock for SPCA Christchurch for years – driving animals, fostering challenging cases and showing up rain or shine. Her kindness and consistency are unmatched.

These volunteers represent the very best of SPCA: kindness, bravery, service and community. We are endlessly grateful for their contribution to animal welfare.



Legacy giving and partnerships

Supporters like Pinky, who chose to leave a legacy gift to SPCA in her Will, remind us that compassion can live on. Legacy donations help us plan and ensure long-term sustainability. We would also like to acknowledge the many legacy donors who have contributed across many years, either through donations, volunteering or fostering.

Long-time feline fosterer Pinky Shah has opened her heart and home to countless kittens since 2015, offering care, comfort and a second chance to those most in need. What began as a tentative step into fostering quickly became a passion, one that even led to a “foster fail” with her beloved cat Julie. Over the years, Pinky has dedicated her holidays, energy

and compassion to the animals of SPCA, supporting desexing education and advocating for better outcomes for animals.

Now, Pinky has chosen to leave a gift in her Will to SPCA through our Giving Hearts programme. With no children of her own and a deep love for animals, she sees this legacy as a way to continue making a difference long after she’s gone. *“I can think of no better way to acknowledge my love of cats and the work SPCA does,”* she says. Her story is a powerful reminder that compassion can live on and that every act of kindness, big or small, helps shape a better future for animals in Aotearoa.

Corporate partners, sponsors and grant funders also played a key role this year, supporting everything from matched giving days to feeding our animals, and from helping us buy vehicles to making capital improvements possible in our Centres. Sometimes these funders even help us keep the lights on and pay our staff!



Perpetual charitable trusts

We would like to acknowledge and thank those who have left a legacy of ongoing support through a perpetual charitable trust. The annual gifts from these trusts help ensure a brighter future for New Zealand’s animals. In 2024-2025, the following charitable estates and trusts generously supported SPCA.

- > Alison Jenkins Foundation
- > Archibella J Wilson Estate
- > Audrey Simpson Trust Fund
- > Beatrix & Louise Butler Charitable Trust
- > Beverley Tregoe & Dorothy Bromley Trust
- > Braveheart Farm Trust
- > Brian Ramsden Trust
- > Burns Family Charitable Trust
- > Carol Bithell Fund
- > Charles & Vera Thrush Charitable Trust
- > Cicely Petre Memorial Trust
- > Conwell Family Trust
- > De Jager Trust
- > Doris M Partridge Trust
- > Dorothy, Arthur & Diana Topp Charitable Trust
- > Dorothy May Coveney Charitable Trust
- > Edith LG Tongue Trust
- > Eleanor M Pharazyn Charitable Trust
- > Eric Walter Colley Estate
- > Estate of Agnes Elizabeth Fraser
- > Estate of Agnes Isabella Wood
- > Estate of Douglas Hooper
- > Estate of John James Gracie
- > Estate of Leslie Charles Doubleday
- > Estate of Patricia B Flemming
- > Estate of Ronald Lewis Jeffery
- > Estate of Russell John Stedman Wells
- > Estate of Walter Stanley Middlesmiss
- > Estate of William Hanna
- > Eunice L Chick Endowment Trust
- > Frances Muter Charitable Trust
- > Frederick & Audrey Adams Trust
- > G & B Davies Charitable Trust
- > Garry & Norah Madden Trust
- > Githa Bender Charitable Trust
- > Goodwill Charitable Trust
- > H & K Reynolds Charitable Trust
- > Irene & Stanley Sawtell Charitable Trust
- > Irene Erica Cowan Charitable Trust
- > Irene Marjorie Davis Trust
- > James & Mabel Thorburn Charitable Trust
- > JEC Kahn Charitable Trust
- > Joy Oliver Fund
- > Joyce & Lawrence Olliver Charitable Trust
- > Kathleen Whyte Charitable Trust
- > Kelleher Charitable Trust
- > Leonard Monk Charitable Trust
- > Mac & Tui Chapman Charitable Trust
- > Madeleine Joyce Adams Charitable Trust
- > Margaret & Erick Kershaw Endowment Fund
- > Marg-Rose Linder Charitable Trust
- > Maurice JA Woods & Grace E Taylor Memorial Trust
- > Melville R & Thelma E Overend Perpetual Trust
- > Michael & Kathleen Nuttal Memorial Trust
- > Mona Gane Charitable Trust
- > Morris & Mary Evans Charitable Trust
- > Mrs IV Braithwaite Charitable Trust
- > Myra Heinekamp Perpetual Trust
- > Norman Frances Paton Charitable Trust
- > Phillip Verry Charitable Foundation
- > Phyllis Thomas & Roy Thomas Charitable Trust
- > Pukerua Bay Charitable Trust
- > Reginald & Alma Langley Trust
- > Roberta & Enid Griffin Fund
- > Robin Elspie Philip Charitable Trust
- > Ruth Petty Trust
- > Stanley V Ratley Trust
- > Sybil Mary Gaudin Charitable Trust
- > Thelma B Mitchell Estate
- > Webster & Hockenhall Family Trust
- > Wellington Sister Charitable Trust
- > William Noel Pharazyn Charitable Trust
- > Woodville Charitable Trust
- > Zero Trust



Legacies: Supporting SPCA

We want to acknowledge the generosity of those who left a gift to SPCA in their Will during 2024-2025. These contributions will have a lasting impact on the welfare of New Zealand's animals for generations to come.

> Adele Poulter	> Audrey Zuurbier	> Christine Carr	> Doreen Hyndman
> Ailsa Reilly	> Barbara Atkins	> Christine Fuller	> Doris Provo
> Alan McGrath	> Barbara McGuinness	> Christine Ker	> Dorothy Kerr
> Allan Edwards	> Barbara Roberts	> Christine Spence	> Dorothy Morris
> Alyx Ryan	> Barbara Steven	> Christopher "Rod" Smith	> Dorothy Ruesink
> Andrew Haberfield	> Barbara Sweeney	> Claire Tonks	> Edna Collingwood
> Angelina Barclay	> Barbara Williams	> Colin Benbrook	> Edward James
> Ann Gilberd	> Barrie Thompson	> Colleen Schischka	> Eileen Robinson
> Anne McKay	> Barry Thoresen	> Colleen Watchorn	> Eli Selinkoff
> Anne Pearman	> Benita Jones	> Cynthia Fanselow	> Eliska Berrysmith
> Anne-Maree Lawson	> Betty Hooker	> Damian Mackie	> Elizabeth Brown
> Annette Charlton	> Betty Kiddie	> Daphne Anderson	> Elizabeth Sullivan
> Annette Gillan	> Betty Palmer	> Daphne Verwey	> Ellen Owen
> Annette Jarvis	> Brenda Joyce	> Darius Rapihana	> Elly Maas
> Annette Reidy	> Brenda Palmer	> Darryl Wild	> Emslie Reid
> Anthony Brooker	> Brian "Murray" Williamson	> David Bryan	> Enid Addison
> Anthony Smith	> Bronwyn Witters	> David Clements	> Eric Pannett
> Arthur Howes	> Bruce Johns	> David Frater	> Eric Sullivan
> Athena Galyer	> Catherine Culling	> Deanne Quartermain	> Ethel Harris
> Audrey Harper	> Catherine Keleher	> Derek Reynolds	> Flora Whitfield
> Audrey Smith		> Derek Wood	> Florrie Allam

> Gail Stockman	> Joan Dutton	> Marie "Diane" Lewis	> Robert "Mike" Moore
> Georgiana Tahapehi	> Joan Tyler	> Marie Neill	> Robert Cunningham
> Glenys Prosser	> Jo-Anne Foster	> Marie Nelson	> Robert Currie
> Glenys Sell	> John Atkinson	> Marjorie Gatley	> Robert Hounsell
> Graeme King	> John Baker	> Mary "Claire" Fisher	> Robert Howie
> Graeme Lott	> John McCulloch	> Mary Lavery	> Roberta Tuffery
> Greta Harris	> John O'Donnell	> Mary Marfell	> Robin Ingram
> Gwynneth "Anna" Andrews	> John O'Sullivan	> Mary Pratt	> Rona McKenzie
> Harold Budgen	> Jolene Lavasii	> Maureen Floyd	> Ronald Ross
> Hazel Crossley	> Josef Schouten	> Maureena Holland	> Ronga McKinley
> Hazel Hensman	> Josephine Gamble	> Maurice Benjafield	> Rosemary Clark
> Helen "Claire" Munnings	> Josephine Jephcott	> Mavis Appleyard	> Rosemary Stringer
> Helen MacLean	> Joyce Hosking	> Michelle Schillier	> Royston Sampson
> Helen Whyte	> Joyce Forrest	> Miriam Wright	> Ruth Dalglish
> Helena Geven	> Julia Sich	> Moyna Abbott	> Sally Toy
> Henderika Bulder	> Juliet Eden	> Murray Williams	> Sandra Currie
> Henry "Harry" Brown	> June Barber	> Nadine Lindsay	> Sandra Sewell
> Hope Hucklesby	> June Hill	> Nigel Parsons	> Selwyn Smith
> Ina Benbow	> June MacMillan	> Nina Drummond	> Sharon Lawson
> Inez Stevens	> Karen Remetis	> Nina Parker	> Sheila Parks
> Irene Goodwin	> Katharine McCoy	> Noel Hutchinson	> Shirley Clowes
> Isabella "Mac" McGilvary	> Kathleen Cassel	> Noel Shaskey	> Shirley Jeppe
> Jacqueline Tabram	> Kathleen Pavan	> Noelene Fraser	> Shirley Lindsay
> James Farland	> Kathleen Reeves	> Owen Bell	> Shirley Menzies
> Jamesina Milroy	> Kay Tredrea	> Pamela Frohlich-Curtis	> Shirley Wakely
> Jan Fulton	> Kenneth Hover	> Pamela Terry	> Stephen Rice
> Janet Trotter	> Kenneth Lipscomb	> Patricia "Ann" Thomas	> Susan Dick
> Janet Brears	> Kenneth Parnell	> Patricia "Jane" Sparks	> Suzanne Mason
> Janet Turner	> Lee Lee Heah	> Patricia Akerblom	> Terence Horton
> Janice "Jan" Cullinane	> Leonard Taylor	> Patricia Murtagh	> Teresa West
> Janice Gorman	> Leonardine Cunningham	> Peggy Fenton	> Thomas Garner
> Janice Harris	> Lesley Cranefield	> Peggy Harrison	> Timothy Fraser
> Janice Munden	> Lilian Hitchcock	> Penelope Smith	> Timothy Hunter
> Janis Jones	> Lillian McFarlane	> Penrhyn "Penny" Allen	> Tracy Spencer
> Jean Howard	> Linda Prince	> Peter McArthur	> Verena "Adele" McDonald
> Jean Barrie	> Lisa Dunn	> Peter Morath	> Vida Wilson
> Jennifer Brand-Morton	> Lynette Martin	> Peter Smillie	> Vincent Beirne
> Jennifer Burr	> Maree Goodman	> Pieter van den Berg	> Wendy Anso
> Jennifer Lewis	> Maree King	> Ralph Woodhouse	> Wendy Harper
> Jewel Brown	> Margaret Bates	> Raymond Chun	> William "Bill" Carney
> Jewel Sutherland	> Margaret Bennett	> Richard Romley	> William Strong
	> Margot Woolley	> Richard Smith	
		> Richards Henley	

Grant funders

In 2024-2025 the following foundations, trusts and councils have generously supported SPCA. We would like to acknowledge and thank these organisations for helping make our work possible throughout the year.

- > Acorn Charitable Trust, managed by Public Trust
- > Air Rescue Services Limited
- > Auckland City Council
- > B A Lewis Charitable Trust, managed by Perpetual Guardian
- > BlueSky Community Trust
- > Brian Whiteacre Charitable Trust, managed by Public Trust
- > Carterton District Council
- > Companion Animals NZ Trust
- > Crawshaw-Milligan Animal Welfare Trust
- > Cyclone Appeal Fund
- > Department of Corrections
- > Dr Marjorie Barclay Trust
- > Dragon Community Trust
- > Dunedin City Council
- > Elaine Gurr Endowment Trust, managed by Perpetual Guardian
- > First Light Foundation
- > Four Winds Foundation
- > Freda Sutherland Memorial Trust
- > Gallagher Charitable Trust
- > Glenice & John Gallagher Foundation
- > Grassroots Trust
- > Grey District Council
- > Grummitt Sisters Charitable Trust, managed by Perpetual Guardian
- > Hamilton City Council
- > Harcourts Foundation
- > Hilda Curtis Charitable Trust, managed by Public Trust
- > Hutt Mana Charitable Trust
- > International Fund for Animal Welfare
- > Invercargill Licensing Foundation
- > Invercargill Licensing Trust
- > Joyce Fisher Charitable Trust
- > Kātoatoa Ministry of Pacific Peoples
- > Kiwi Gaming Foundation
- > Lake Memorial Charitable Trust, managed by Perpetual Guardian
- > Lottery Minister's Discretionary fund
- > Mainland Foundation
- > Margaret Olive Russell Charitable Trust, managed by Perpetual Guardian
- > Masterton District Council
- > Milestone Community Foundation
- > New Plymouth District Council
- > New Zealand Community Trust
- > Nikau Foundation
- > North & South Trust
- > New Zealand Community Trust
- > One Foundation
- > Otorohanga District Council
- > Oxford Sports Trust
- > Pamela Webb Charitable Trust, managed by Perpetual Guardian
- > Pelorus Trust
- > Rano Community Trust
- > Redwood Trust
- > Reed Charitable Trust, managed by Perpetual Guardian
- > Room Simmonds Charitable Trust, managed by Perpetual Guardian
- > Rotorua Trust
- > Roy Owen Dixie Charitable Trust, managed by Public Trust
- > Simplicity Foundation
- > South Taranaki District Council
- > South Wairarapa District Council
- > Taupo District Council
- > Tauranga City Council
- > The Darcy Christopher Foundation
- > The Lion Foundation
- > The Sunrise Foundation
- > The Trusts Community Foundation
- > Toi Foundation
- > Trillian Trust
- > Trust House Foundation
- > We Care Community Trust
- > West Coast Community Trust
- > Whakatane District Council
- > William Downie Stewart Charitable Trust
- > Zelda Roberts, managed by Public Trust

Partners and sponsors

We collaborate with generous and innovative businesses that support SPCA in numerous ways. They back us by raising awareness, supporting our team and funding our work.



Nestle Purina believe pets and people are better together and are committed to helping SPCA with animal care and welfare. That care starts with the right nutrition, and this is why the cats and dogs of SPCA are fed the premium nutrition of Purina ONE. Nestle Purina donates over 100,000kgs of Purina ONE (as well as its more specialty care pet food for those animals that need to be on special diets) to SPCA each year. Nestle Purina also donate a large number of gift hampers to SPCA staff, volunteers, and winners of competitions each year. Thank you for your continuing support, Nestle Purina.



SPCA Pet Insurance is a pet insurance brand committed to helping pet owners build a stronger bond with their pets by providing pet insurance to help cover some of the cost of vet bills. SPCA Pet Insurance is an official partner of SPCA – this means that when you purchase a policy through SPCA Pet Insurance, you're supporting the great work of SPCA. At SPCA Pet Insurance, they believe happy pets make happy owners. That's why they're all about letting you say 'Yes' to your pet more often. 'Yes' to that run in the park. 'Yes' to the exciting car ride and 'Yes' to the best possible medical care for your cat or dog, without worrying about the cost.



Minter Ellison Rudd Watts is a leading full-service law firm and continues to proudly support SPCA by providing pro bono and subsidised legal advice. Through their Community Investment Programme, they support grassroots and community organisations of Aotearoa New Zealand. The team believes that by using collective skills, time and resources they are able to make a positive impact for people, communities and our planet.



Petdirect is New Zealand's Kiwi-owned pet supply retailer. By Kiwis, for Kiwis, Petdirect is SPCA's Primary Pet Retail Partner. This year, they've sponsored our matched giving campaign – generously matching donations made by members of the public. They get pet.



Ezeco donates \$1.00 to SPCA from every Ezebag purchase, both bags and pouches, made in-store and through their website. Ezeco has been a long-term supporter of SPCA.



The Coffee Club has been working with SPCA on selected events and campaigns since 2019, and this year, they helped SPCA raise much-needed funds by being presenting partner of the Pets of the Year campaign.

Event Sponsors:

We are fortunate to have the support of a range of businesses in New Zealand who contribute to our campaigns and fundraising events through prizes, incentives and other activities.



Business Supporters:

If you see this logo on a Kiwi business's website or social media, it shows that they generously donate a percentage of their profits to SPCA. We thank our growing community of Business Supporters across New Zealand for continuing to give to SPCA.

People and performance

At SPCA, we believe animal welfare is not just a profession – it’s a passion. With over 850 employees across 28 Centres, 90+ Op Shops and remote teams nationwide, SPCA offers a diverse range of roles that go far beyond animal care.

From Inspectors and Vet Nurses to Fundraisers, Educators, and IT Specialists, our people work hard to advance animal welfare and prevent cruelty. In 2025, we continued to invest in our people, launching new tools that support employees to build a meaningful, lifelong career at SPCA, not just a pit stop.

In this section, we hear from team members **Pip Lamb**, **Rebecca Dobson** and **Ben Lakomy** about their career journeys and what makes SPCA a place to grow.

Pip Lamb Leading with purpose

Pip Lamb, who is a qualified Vet Nurse, began her journey with SPCA in 2013, transitioning from a weekend role as an Animal Attendant and Ambulance Officer to an Inspector in Napier. She went on to become the Team Leader for the Hawke’s Bay and Gisborne Inspectorate teams and has now moved into her new role as Operations Manager for our Southern region, where she’ll support Regional Managers and lead change.

Pip’s passion for animal welfare is matched by her commitment to leadership and growth. She’s completed MPI-sponsored training in animal welfare investigations, developed specialist skills in species care and tactical communication and now mentors new Inspectors.

“Working in animal welfare and leading within SPCA gives me purpose. It’s my ‘why,’” she says.

From embedding SPCA’s values into team culture to representing SPCA New Zealand at RSPCA in England, Pip’s career is just one example of what’s possible when purpose meets opportunity. Her story reflects the heart of SPCA, a place where people grow, lead and make an impact.



Rebecca (Becs) Dobson Making a difference everyday

From Vet Nurse to national leader, Becs has built a career defined by purpose and growth. After the Christchurch earthquakes, she moved to Melbourne, working in both private vet practice and at the RSPCA before returning to New Zealand in 2014. She’s been at SPCA for 11 years in six different roles, starting in customer service and moving up to her current position as Head of Community Operations.

Her current role spans national desexing programmes, community outreach, emergency preparedness and strategic leadership. She’s passionate about collaboration with rescue groups, volunteers and our Community Service Officers, and about helping both animals and people.

“I’ve been lucky to have managers who believed in me,” she says. *“I’ve studied project and change management, and I wake up every day feeling grateful that I get to make a difference.”*

One moment stands out for Becs: working in Northland with a man who had many cats and dogs and needed support. After desexing his last pet, he quietly said, *“I don’t have to worry about what to do with the unwanted puppies anymore.”* That moment reminded her how SPCA helps both animals and people.

“If you love animals and people, and you’re open to growth,” she says, *“SPCA is the place to be.”*



Ben Lakomy 20 years of impact

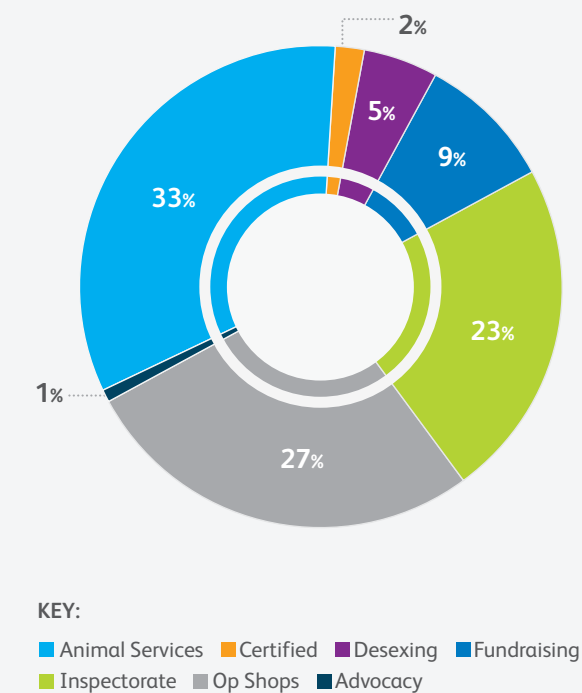
Ben Lakomy’s journey with SPCA began when he was just 11 years old, helping an Education Officer load donated pet food into a car. That moment sparked a lifelong commitment to animal welfare. Now, 20 years into his career that spans roles from volunteer to Inspector, Team Lead for the greater Wellington region, and now Inspectorate Regional Manager, Ben reflects on the power of persistence and compassion.

“What keeps me going is knowing I can lawfully remove an animal in need and see them recover in our care,” he says. One case that stands out is Cassy, a severely emaciated Staffy found under a house. After a long recovery, she was adopted and would greet Ben with joy whenever they crossed paths.

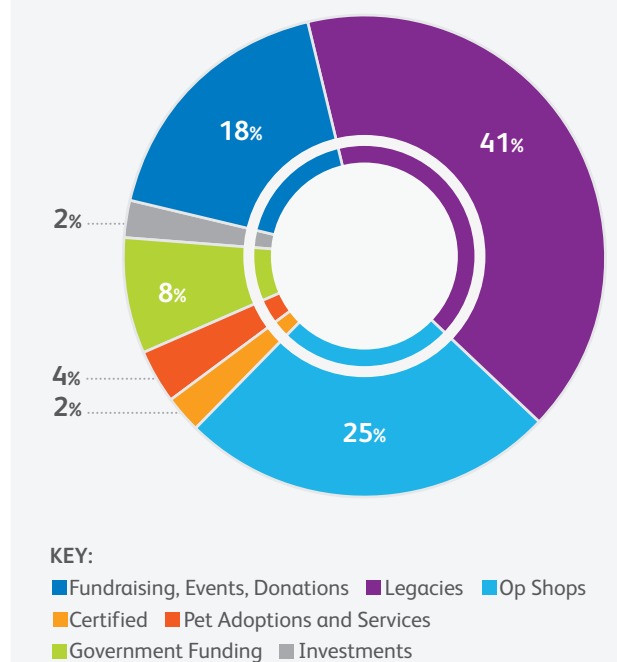
Ben’s passion extends beyond rescue; he’s dedicated to mentoring others and sharing his knowledge. *“It’s a job with meaning,”* he says. *“I’m proud to help animals and their families, and to support my team to do the same.”*

Our finances

Operating Expenses Where do we spend our money?



Income Where do we get our money from?



Finance summary for period ended 30 June 2025

Chapter 6

Get involved



Animal welfare made possible

SPCA’s work is made possible by people like you, who give their time, energy and resources to help animals in need.

Whether it’s volunteering, donating, fostering, buying or using SPCA Certified products and services (or asking your supermarket to stock those products), taking part in an SPCA event or simply sharing our message, there are so many ways people get involved and make a difference.

This year, thousands of volunteers and fosterers across New Zealand helped animals in need. From walking dogs and cuddling cats to supporting our Fill the Bucket street appeal and helping at events, every contribution they made mattered. We also connected with new, younger audiences to spread our message, launching

TikTok and using video to share stories in fresh, engaging ways.

We were proud to be part of Giving Tuesday for the first time, a global movement that encourages generosity and peer-to-peer fundraising. Cupcake Day and Pets of the Year were more traditional ways that our supporters helped vulnerable animals, through baking delicious goodies to sell and fundraise, and by entering their pet’s best photo to compete for a spot in our 2025 calendar. A competitor named Deli Department took the cat calendar’s top prize for the third year running; he has a dedicated following who consistently support SPCA, for whom we are very grateful.



Turning waste into comfort

Creativity and community came together at Whanganui Prison in an inspiring story of reducing waste, creating new opportunities and giving back to the local area. An instructor at the prison, seeing an opportunity, transformed old landfill-bound prison mattresses into bedding. These beds provide comfort for animals awaiting their forever homes, giving them a safe, cozy space as they wait to meet their new families. The beds were also distributed to other SPCA Centres and the Animal Rescue Action Network (ARAN), extending their impact beyond the local area.

“What started as an effort to reduce waste at Whanganui Prison has grown into something much larger: an opportunity to help animals, support SPCA, and foster a spirit of collaboration and creativity within the prison.”

— SPCA Centre team

Wiri



Investing in the future

SPCA continues to offer warm, safe, dry spaces to shelter animals. This year, we updated our Hobsonville Centre (Auckland) to increase capacity, and it has been designed to provide a calm, welcoming environment for animals and potential adopters. The Centre features modern animal care areas, and dedicated meet and greet adoption spaces.

Our Māngere Centre, which is past its usefulness, with dated design and crumbling materials harbouring diseases (despite our absolute best and frequent cleaning) and poor layout severely impacting the animals in our care, will be replaced by a new Centre in Wiri (Auckland). Work is underway, and the new Wiri Centre will increase capacity, reduce time in care for our animals, and help us respond more effectively to seasonal surges like kitten season.

In 2025, we reopened our Hokitika Centre and closed our Westport Centre. With the cessation of boarding services in the area, and with no animals in the Centre's care, we instead appointed a Community Support Officer and began intensive new desexing initiatives in the region – deemed to have a far greater impact in serving the community. The Hokitika Centre was reopened to better serve sick, injured and vulnerable animals, and to absorb overflow from our Greymouth Centre. We have also progressed plans to improve the dog runs in Tauranga, carry out roof repairs for our Christchurch Centre and relocate and upgrade our facilities in Whangārei.

We continue to grow our success in fundraising through our Op Shop network expansion and optimisation, with 16 new sites leased in this financial year, and another 13 new Op Shops planned for the 2026 financial year. We now have over 90 SPCA Op Shops trading nationwide, which are integral in building our sustainable income model.

Our investment in Centre improvements and our Op Shop network reflect our commitment to providing the best standard of care we can afford, and to creating spaces that support both animals and their communities. This is only possible thanks to your donations, sponsorships, grants and support.

Hobsonville



Volunteering and fostering: Join the SPCA family

SPCA simply couldn't function without the incredible support of our volunteers and fosterers.

With over **4,000** volunteer roles available across the country and more foster parents always needed, there's a way for everyone to get involved no matter your age, background or availability.

You can volunteer at:

- 28 SPCA Centres
- 90+ Op Shops
- SPCA events (like our annual Fill the Bucket street appeal)
- Your home – whether through baking cupcakes for Cupcake Day, taking a photo for our Pets of the Year calendar competition, encouraging your friends to support through donations or creating enrichment toys for the animals in our care, the options are endless.

Volunteer roles include:

- Animal Centre volunteers (cats, dogs, small animals, farmed animals)
- Op Shop volunteers (sorting, serving, merchandising)
- Volunteer drivers, toy makers, fundraisers and admin support
- Fill the Bucket volunteer Area Coordinators and volunteer Street Collectors
- Foster parents for animals needing extra care before adoption

Fostering is especially needed for animals recovering from illness, surgery or trauma. It gives them a quiet, loving space to heal and helps free up room in our Centres for others in need. It also helps them to experience a loving home environment away from the Centre and prepare them for life with their forever families.



“Volunteering with SPCA is a great way to meet like-minded people, learn new skills and make a real difference for animals.”

— SPCA Volunteer team

Whether you can give a few hours a week or help during a campaign, every bit of support counts.



“Some of the memorable moments I had when I volunteered for Fill the Bucket were getting to have cuddles with beautiful fur friends, the generous donation from the Team at Bunnings Glenfield (which blew my mind!) and meeting the other volunteers and new faces in the community. But the most rewarding part was giving time to help, listening and sharing stories with members of the public.”

— Volunteer Area Coordinator, Fill the Bucket, Auckland

Your work in numbers



4,023
Volunteers



3,302
Fosterers

Combined: 7,325

Think Animal Welfare Think SPCA

PURPOSE:

To advance animal welfare and prevent cruelty

VISION:

A world where all animals are treated with respect and kindness

FOUNDING ETHOS:

We speak for those who cannot speak for themselves

OUR VALUES:



Ka Kotahi Mātau
We are One



Ka Manaaki Mātau
We are Kind



Ka Māia Mātau
We are Brave



Ka Ora Mātau
We Serve



Ka Mahi Mātau
We Thrive



**Together, we can
give them a better life.**