



Te Rōpū Aukati Tūkinō Kararehe



YEAR IN REVIEW

2022-23

“To our supporters, we couldn’t have done it without you. Your dedication has been the bedrock of our accomplishments, allowing us to make a tangible difference in the lives of animals. Thank you for standing with us and being a vital part of our mission.”

He waka eke noa. (We’re all in this together)



Photo credit: Sol Hessell Photography

SPCA BOARD:

- David Broderick (Chair)
- Bobbie O’Fee
- Steve Merchant
- Julie Sellar
- David Heald
- Jane Holland

SPCA SENIOR LEADERSHIP TEAM:

- Robyn Kiddle - Interim CEO
- Jason Copus - CFO
- Dr Arnja Dale - Chief Scientific Officer
- Julia van de Coolwijk - General Manager, Engagement
- Liz MacPherson - General Manager, People, Culture & Safety
- Cathy Crichton - National Op Shops & Retail Manager

Purpose

To advance animal welfare and prevent cruelty
Te kōkiri i ngā mahi atawhai kararehe me te aukati tūkino

Vision

All animal lives matter in our communities
He mea nui te oranga o ngā kararehe katoa kei ō tātau hapori

Founding ethos

We speak for those who cannot speak for themselves
He reo mātau mō rātau kāore e taea te kōrero

Values



CONTENTS

01 Chair CEO intro	
The Chair’s Report	4
02 How the animals were cared for	
In our care	7
In foster care	8
Alongside Vet Affiliates	8
In the courts	9
In the community	9
In time of crisis	10
Desexing to curb the cycle of neglect	12
03 How animals’ voices are heard	
Advocacy	15
SPCACertified™ - Driving Real Change	16
Educating our children	19
SPCA Rescue	20
A Group Effort	21
04 What makes this work possible	
Op Shops	23
Dedicated donors	24
Government contribution	25
Grant funders & trusts	26
Partners and Sponsors	27
Legacies	28
05 Behind us all the way	
Our people	31
Our volunteers	32
06 Impact Report	
Impact Report	34

SPCA Financial Statements can be found at www.spcan.z

01
Intro from
the chair



The Chair's Report

It is my honour to introduce the Annual Review for the year 2022-2023. As the Chair of SPCA, I am humbled and proud to reflect on a year that has been marked by a heightened awareness of the animal welfare challenges facing the country, as well as the profound progress we have made in the advocacy space. From speaking up for those dogs constantly chained until we drove the topic to public consultation level, right through to keeping the issue of overpopulation and need for desexing front and centre – we have been ensuring the future for companion animals is much brighter.

Before we dive into these efforts in more detail in our review, I want to thank all our supporters who made our work possible. Their unwavering generosity and steadfast support, makes a profound difference in the lives of countless animals.

Every day, we witness stories of immense suffering and unimaginable cruelty inflicted upon innocent animals. It is in these heartbreaking moments that we find the strength to fight for change. We understand that behind every pair of pleading eyes lies a soul that deserves a chance at a life free from pain and fear. And it is the belief

A note from Robyn

I've had the pleasure of stepping out of my governance role on the Board to help SPCA as interim CEO shortly before the 2022-2023 financial year came to a close. This is an organisation with so much heart – and it comes from the work we do, the people who do it and the wonderful supporters who make it possible. What a privilege it is to be in this role, assisting the organisation until a new leader is appointed.

It is often said that the measure of a society can be determined by how it treats its most vulnerable members. In that regard, I am incredibly proud to be a part of a community that recognises the worth and dignity of every living being, regardless of species. I'd like to thank our staff, volunteers and supporters for their amazing dedication. Your compassion has transformed the lives of countless animals.

This report demonstrates their combined impact, which is far more difficult to outline on paper than it is to see and feel. We are inching ever closer to our vision of a world where all animals are treated with compassion and respect.

Robyn



in our mission that gives us the resources and the courage to continue this critical work.

Generous donations provided the lifeline for 33,057 vulnerable animals coming through our doors this last year. They enabled us to rescue, rehabilitate and find loving forever homes for these precious creatures. It is because of your support that we can provide the medical care, nourishment, and shelter that they so desperately need. These contributions help us create safe havens, where animals can heal both physically and emotionally, surrounded by the love and care they deserve.

But our work goes beyond individual rescues. The public's generous support allows us to advocate for stronger animal welfare laws and regulations, promoting a society that values the wellbeing of animals. It empowers us to educate communities about responsible pet ownership, desexing, and the importance of compassion towards all living beings. Together, we are making a lasting impact on the lives of animals, one compassionate action at a time.

This past year SPCA has experienced a time of change, along with many others in the charitable sector.

Our supporters will be acutely aware of the need for our services and the lasting impact that COVID lockdowns, cost of living and reduced desexing have had on companion animals. Changes in the operational landscape, around fundraising shifting dramatically and cost of delivering services jumping, have challenged our resilience.

However, with changes also comes comforting constants. Namely, our unwavering commitment to being the voice for the animals. Year on year since becoming "One SPCA" in 2017, we have been able to deliver combining our strengths and our efforts to improve the health and welfare of all New Zealand's animals. We do this collectively, with our supporters' help.

On behalf of every animal we have rescued, every life we have changed, and every wagging tail or purring friend we have been able to place in a loving home, we are deeply grateful for the support.

David Broderick, SPCA Chair

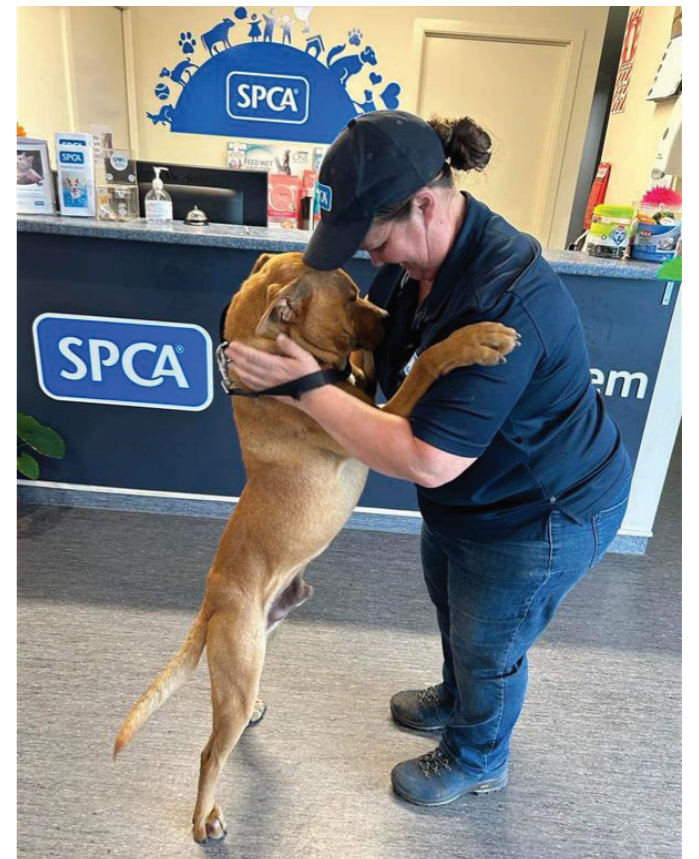
02
How the animals were cared for



In our care

Our 30 Centres provided a haven for sick, injured and vulnerable animals. Every day, our staff and volunteers go above and beyond to rehabilitate and care for animals in need. They tirelessly work to restore trust, heal wounds, and mend broken spirits.

In the last year, we have seen the length of stay increase for animals in our Centres. This is symbolic of a slowdown in adoptions, which is impacted by both companion animal overpopulation and people tightening their purse strings ahead of a predicted tougher financial environment. We had 33,057 animals pass through our doors, and on average they stayed with us 11% longer than they did the previous year. Because, once an animal is up for adoption, we commit to caring for that animal for as long as it takes to find them a new home. This means we ultimately had less free space for incoming animals. Incoming cats and kittens were up nearly 8% on the previous year, and dogs and puppies also increased more than 7%.



In the past year we:

Adopted
16,307
animals out

Desexed
16,538
animals in our Centres

We also received **7,760** ambulance jobs, **313** of which were animal rescue jobs, involving providing medical assistance and transportation for injured or distressed animals.



Bruce, a two-year-old mixed breed, was with our Whanganui Centre 100-plus days before his adoption. He arrived in pretty bad shape - itchy, sore and with his entire body infected with demodectic mange. After loving treatment, training and socialisation, Bruce blossomed (pictured in the bandana). He patiently waited for his forever family, who arrived and took him home in May 2023, following a public campaign. Happily, he has also found love with his new pup-sister Layla.

In foster care

Foster parents play a vital role in the rehabilitation and successful adoption of animals.

These compassionate volunteers provide a safe and nurturing home environment for animals in need. By opening their hearts and homes, foster parents offer animals a chance to regain trust, rebuild confidence, and experience the love and care they deserve. They are provided everything they need from SPCA so there is no financial cost to them. The essential socialisation, experience in a home and loving care is priceless to each animal and increases their chances of adoption. Their invaluable contribution gives these animals a second chance at life, making them true heroes in the journey towards animal welfare. In the last year, 13,534 animals spent time in foster care.

Like Margaret here, who took out our ‘Fantastic Foster Family’ Award in our SPCA Purina National Volunteer Awards. Margaret Nixon has fostered an incredible 617 animals for SPCA’s Wellington Centre, averaging nearly 50 foster animals per year since she began fostering in 2009. And in 2020, Margaret took it to a new level. Using her skills as an architect, she transformed her home to suit the special needs of animals in her care. She included thoughtful details such as extended window sills for the cats to enjoy the views and the garage door was installed with the windows for the same purpose. In March 2023, Margaret calmly took on 14 kittens in one day, due to the Centre being at capacity. She saves lives and enriches them - Margaret is truly a hero.



Alongside Vet Affiliates

The collaboration between SPCA and veterinarians is vital in achieving a broader reach and better welfare outcomes for animals.

By combining the expertise and resources of both organisations, we’re able to provide more efficient and comprehensive care for animals in need.

Our focus for this affiliate model is to promote a seamless flow of information and resources, allowing for better coordination, sharing best practices,

collaborating on community outreach initiatives, and advocating for animal rights collectively.

We currently have six official vet affiliates across 12 locations and we continue our usual partnering with dozens of incredible vets around the country.

In the courts

The role of SPCA Inspectors as law enforcement for the Animal Welfare Act is both deeply impactful and very challenging.

These dedicated individuals are on the front lines, working to protect and advocate for the well-being of animals in our society. They both educate pet owners who are in need of guidance, and ensure perpetrators of abuse are held accountable for their actions. SPCA Inspectors navigate challenging and emotionally charged situations, witnessing the unimaginable suffering inflicted upon innocent creatures. Their role goes beyond enforcing the law; it encompasses compassion, empathy, and a commitment to fighting for the rights and welfare of animals.

In the past year, we received a total of 13,439 animal welfare reports, covering more than 20 different species. While a significant number of these cases were resolved without resorting to legal proceedings, we took pride in filing 54 prosecution charges in court. A number of prosecutions were concluded resulting in 27 convictions with additional cases still pending.

SPCA Inspectors employ a multifaceted approach to improve animal welfare outcomes, as prosecution is not always the most appropriate course of action to pursue. Their use of legal tools, education, and awareness campaigns, as well as their dedication to addressing the

unique complexities of each case, ensures that animals receive the best possible care and protection. SPCA Inspectors remain dedicated to their mission and do an excellent job of navigating the emotional toll that often accompanies their work.

We’d like to thank our supporters for their appreciation of the vital role SPCA Inspectors play, recognising their dedication and unwavering efforts to create a more compassionate and humane world for animals.

A particularly upsetting and complex case concluded in July 2022, when a director of a pet food company was prosecuted for reducing three horses to skeletal condition and depriving them of veterinary care. The defendant had told an SPCA Inspector that horses were “mongrels” and people only dropped them at his property for people to “deal with”. This demonstrated a very complicated case where we needed to enforce animal welfare, even for animals intended to be food. Animals possess the capacity to experience pain, distress, and exhibit emotions and upholding high standards of animal welfare ensures that they are treated with dignity, are spared unnecessary pain and suffering and are offered a humane death.

In the community



Our work in the community is increasing as we invest time and resources supporting animals and their owners.

While shelters are essential for temporary care, animals generally do not thrive in shelter environments, which are stressful and unsettling for them long term. By focusing on community outreach, SPCA can address the root causes of overpopulation, animal abandonment and relinquishment – working to prevent the need for shelter placement in the first place.

- Our Community Desexing Programme for people in need saw 5,178 animals desexed, preventing an estimated 13,800 unwanted kittens and puppies being born the following year.
- Education and advice initiatives equip pet owners with the knowledge and resources necessary to provide proper care, leading to healthier and happier animals who can remain in loving homes. Our Inspectors attended 3,250 jobs where they

provided verbal advice and assistance and 1,920 jobs which resulted in educative outcomes or warnings. They also took more than 3,900 animals into SPCA’s care.

- By providing food assistance to struggling pet owners, SPCA ensures that financial hardships do not lead to neglect or surrender, helping keep animals in their homes with loved ones.

SPCA also has working relationships with a number of wonderful rescue groups, providing them food, flea and worm treatments as well as offering the SPCA Desexing Grant run through Companion Animals NZ Trust. By working hand in hand with local rescues, SPCA can tap into their valuable community knowledge and networks, ensuring a comprehensive and efficient approach to animal welfare.



In times of crisis

The extreme weather events experienced in New Zealand over the past year have posed numerous societal challenges and have been a significant issue for animal welfare as well. In cyclone and flooding situations, animals are particularly vulnerable.

Auckland's January 2023 flooding was the first challenging crisis and SPCA was quick to respond and provide support. Our Inspectorate team helped with emergency calls and animal rescues, and our Centre staff provided animal food and supplies to food banks, emergency animal shelters and communities. Together with local council, our team set up a stall at the Moana-Nui-a-Kiwa Community Support Centre to provide advice and pet care packages for those in need, including food, blankets, litter and collars. We also opened the doors of our Māngere Centre to offer free vital services to Auckland pet owners in the wake of the floods, including vaccinations, microchipping, flea treatments and worming tablets. Free of charge, we vaccinated 158 dogs and 33 cats, microchipped

141 dogs and 33 cats, and all animals received flea and worm treatments.

Cyclone Gabrielle followed shortly after, with devastating effects as people were displaced from their homes and widespread damage was caused to property and infrastructure. Unfortunately, animals were also severely impacted. SPCA staff from across New Zealand were sent to assist with the rescue and response efforts in Hawke's Bay and Tairāwhiti. Our people played a key role in rescuing and housing animals affected by the floods. This included not only cats and dogs, but also horses, cattle, sheep and chickens.

SPCA also worked closely with the Ministry for Primary Industries (MPI), HUHA Rescue and VERT (Veterinary



Emergency Response Team- Massey University Foundation) to set up an emergency shelter for affected animals at the Hastings Racecourse. This provided a safe and secure location for both lost and displaced animals while their owners were dealing with the aftermath of the floods.

To keep animals fed during this time, we sent two truckloads full of animal food to Hawke's Bay and one truckload to Tairāwhiti. The latter was sent in a special convoy due to the difficult road conditions and transport of that food alone was \$6,000 per truck. Our partner Purina generously provided more than \$800,000 worth of pet food for us to help distribute throughout both events.

In the weeks following Cyclone Gabrielle, SPCA transported 80 kittens down to the Wellington Centre so our Hawke's Bay teams would have more capacity to assist with the cyclone response. These kittens were adopted very quickly in Wellington, from a community keen to open their homes to furry companions to help the recovery efforts. Our animal transport bus also made the long journey up from Otago, hitching a ride on the ferry, full of supplies for Hawke's Bay.

A public callout for monetary donations to channel into supporting the cyclone response raised an incredible \$300,000. Almost half of this was used in the immediate flood response, sending staff to impacted areas, transporting displaced animals and coordinating care, shelter and food supplies. These devastating events will have long-term impacts also, and ongoing funds to support these communities will be critical.



Among some of the investments made to provide this stable support in the Hawke's Bay region were a storage container to house essential items and donations and a vehicle to enable the efficient transportation of animals and essential supplies, ensuring timely assistance to those in need.

Domestic pets and strays were left with limited access to shelter and heightened risk of injury or getting lost. Livestock and farm animals have suffered from compromised shelter, limited access to food and water, and increased susceptibility to diseases and injuries. We are proud of our swift action and collaboration with government agencies, non-profit organisations, and communities to provide immediate relief. We are equally proud that we are still in the communities supporting the long-term impacts. Vulnerable strays still arrive through our doors in Hawke's Bay and we're on hand to support with providing food for those livestock animals left without during the winter period.

The need for comprehensive disaster preparedness plans and robust support networks has become evident to safeguard the wellbeing of animals in the face of unpredictable and severe weather patterns. We're committed to allocating resources and implementing sustainable measures to ensure the protection and welfare of animals during and after extreme weather events in New Zealand.



Desexing to curb the cycle of neglect



Desexing remains fundamental to SPCA, due to its profound impact on animal welfare and population control, helping to alleviate the burden on SPCA Centres, rescue shelters, and the community at large.



By promoting and investing in desexing programmes, SPCA can make a significant difference in the lives of countless animals, improving their wellbeing and preventing the cycle of abandonment and suffering.

Our National Desexing Programme has successfully concluded its initial full financial year. The programme was consolidated into a unified, nationwide effort in September 2021. Over the course of the past year, a total of 16,856 animals were desexed as part of the programme’s activities spanning the entire country. This total is a result of many efforts, including:

- **Snip ‘n’ Chip campaigns** – SPCA provides subsidised desexing and microchipping vouchers, with external veterinary clinics delivering the service. In the last year, we have desexed 8,252 animals through these campaigns.

Since August 2022, SPCA covered the costs of all desexing and microchipping for 540 animals in Northland. We worked alongside Kerikeri Highway Vets, funding a desexing programme for cat and dog owners in the North Hokianga region. In June 2023, we also announced a new journey to fund the desexing of 600 Northland animals as part of a joint desexing campaign. This partnership with Bay of Island Veterinary Services and Coast to Coast Cat Rescue, will see 300 cats and 300 dogs receive desexing, vaccination and microchipping in a region where it’s much needed.



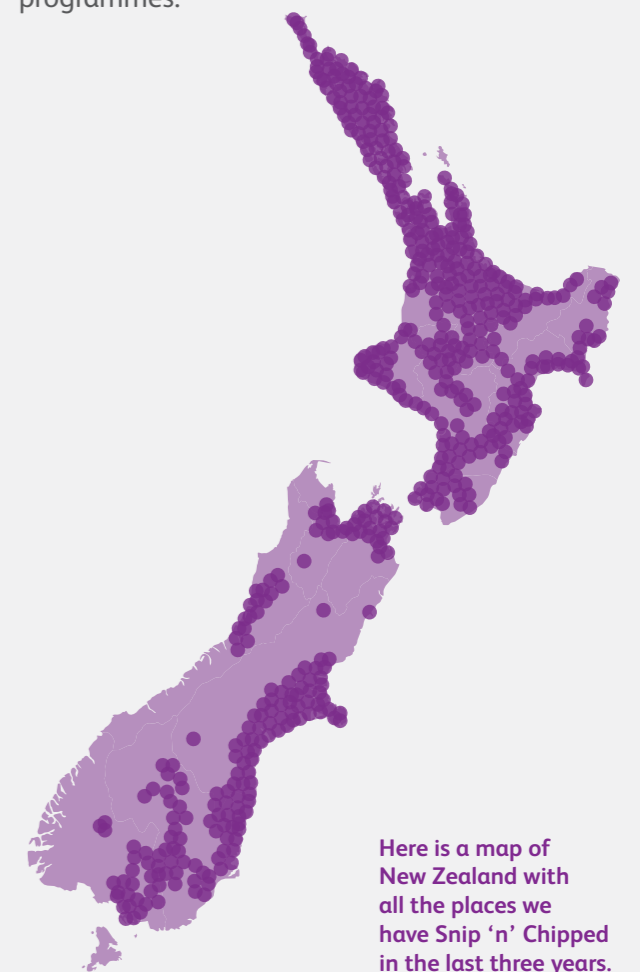
- **Community desexing** – for those truly in need, we are able to provide fully-covered desexing support and have desexed 5,178 animals with this community service.
- **Mobile desexing** – before decommissioning our much-loved desexing caravan, we desexed 378 animals across the East Coast. Thanks to our extremely generous supporters, our new purpose-built Mobile Desexing Clinic is now ready for business. It will make its debut in Northland in the 2023-24 financial year, providing invaluable support to communities in need.
- **Vet partnerships** – funding local veterinarian desexing initiatives represents a highly effective allocation of resources. By partnering with local vets, the SPCA ensures that a targeted and localised approach is taken. Our work in this area will continue to increase and, already, we have funded the desexing of 540-plus animals in Northland with this approach.
- **Rescue group support** – Our support for rescues includes desexing grants administered by Companion Animals Trust New Zealand (CATNZ). This year we assisted more than 2,400 animals cared for by rescue groups to be desexed.

Adding our National Desexing Programme to the animals desexed in SPCA Centres (both externally audited and from our records), our overall desexing footprint equates to more than 33,000 animals in the last 12 months.

We estimate that, through our desexing activities, we’ve been able to prevent the birth of just under 120,000 unwanted animals in the coming year.

Three-year Snip ‘n’ Chip map

We are truly grateful to the hard-working and dedicated Vets, Vet Nurses and support staff in all the Vet Clinics that have supported SPCA’s Snip ‘n’ Chip campaigns and other desexing programmes.



Here is a map of New Zealand with all the places we have Snip ‘n’ Chipped in the last three years.

03
How animals' voices are heard



Advocacy

Advocacy plays a vital role in our mission, as we strive to protect and improve the lives of animals by speaking up for legislative change. By standing together, we have the power to enact lasting change and build a brighter future for animals everywhere.

Animals rely on us as their voice, and by advocating for stronger laws and regulations, we can address the critical issues they face, such as animal cruelty, neglect, and exploitation. The journey is often long and relentless, and much of it involves hard work behind the scenes by our team of Animal Welfare Scientists, reviewing the latest evidence and making recommendations to Members of Parliament, politicians, Government, advisory groups and committees.

Breaking the chain for dogs - Thousands of dogs in New Zealand spend their lives on the end of a chain or in a cage, and the law currently means we cannot act as much as we would like to. In July 2022, more than 20,000 New Zealanders joined SPCA's 'Break the Chain' campaign and emailed the then Minister responsible for Animal Welfare, Meka Whaitiri, to call for legislative change. The Government progressed the newly proposed regulations to the point of public consultation in early 2023 and we're still on their case to ensure they are considered a priority. Once they come into effect, it will mean we have more tools to prevent dogs living in these heartbreaking conditions. We're hopeful there's a light at the end of the tunnel for these dogs.

Pushing for Codes of Welfare changes - Codes of Welfare provide clear guidance to the public on how to meet the welfare needs of animals and also assist animal welfare inspectors to enforce the Animal Welfare Act. While we can't issue them ourselves, we do help draft them and push for them to be updated. The current Codes of Welfare for dogs and cats have not been updated for more than a decade and are out of step with best practice recommendations and the latest scientific knowledge. Some species, such as



rabbits (currently one of the four most popular pets in New Zealand) do not have a code of welfare. This year, SPCA has drafted a code of welfare for rabbits and have committed to presenting updated codes of welfare for cats and dogs to the National Animal Welfare Advisory Council (NAWAC) by late 2023. SPCA has also made submissions into the code reviews for dairy cattle, pigs and deer and encouraged supporters to make submissions too.

Ending the race for greyhounds - In the past year, SPCA has continued to say 'no more chances' for the commercial greyhound racing industry. In late 2022, we launched a campaign engaging the public's help in voicing their concerns to the Minister for Racing, Kieran McNulty, after an independent survey commissioned by us revealed 74% of New Zealanders wanted to end this cruel industry. We've kept the pressure on publicly and in providing our expertise directly to stakeholders on the issue. We remain hopeful there will be a decision to end greyhound racing with a transition period to ensure the welfare of greyhounds is prioritised as they leave the industry and are rehomed.

To help share this work with our supporters and the general public, a new advocacy section on SPCA's website was launched. This makes it easier for people to get involved and drive change on a range of welfare issues. You can visit www.spcan.z/advocacy to take a look.

Engaging
20,000
people to help us try to
'Break the Chain' for
dogs around the country



Speaking up on how to meet
the needs of rabbits, by
drafting a Code of Welfare
currently missing in action

Continuing the fight for
greyhounds with a public
facing campaign and
extensive stakeholder
consultation

SPCA Certified™ – Driving Real Change

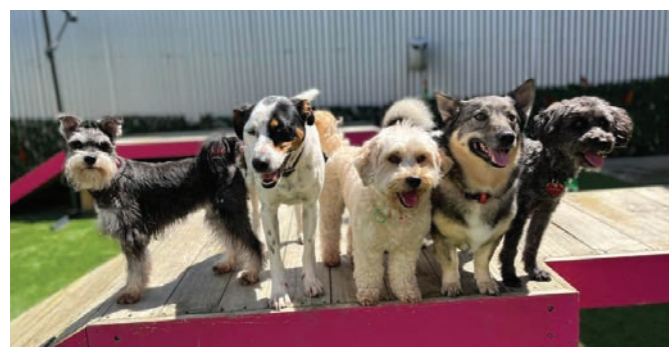
Our SPCA Certified programme is raising standards of care for New Zealand’s farm animals – and now the pet care sector too. While these animals aren’t in our direct care, our work in this area improves the lives of millions of animals.

Farmed animals represent the largest number of animals, both in New Zealand and in countries around the world, and they experience inherent welfare issues. The introduction of humane farming certification programmes is providing a way to improve the daily lives of these animals and drive real change.

SPCA launched its first animal welfare certification programme 23 years ago, called SPCA Blue Tick. In 2020, we renamed the programme SPCA Certified to reflect the inclusion of ‘animals as sentient beings’ in the Animal Welfare Act and our move to base standards on the Five Domains model. This model recognises the emotional needs of animals and states that minimising negative experiences is not enough to provide a good life – we also need to ensure they enjoy positive natural behavioural opportunities too.

SPCA Certified today is a set of animal welfare standards that go above and beyond the current minimum legal requirements to raise the bar of welfare for animals in both the farming and pet care sectors.

We have a total of 14 Members across 100-plus facilities, which are audited at least twice a year. In the past year, more than 26 million farmed animals were cared for under the SPCA Certified Programme.



SPCA Certified Standards

Nine animal welfare standards, which include:

- free range and barn layer hens
- free range and barn raised meat chickens
- free farmed and free range pigs
- beef cattle
- sheep
- dairy sheep
- dairy cattle
- Chinook salmon
- pet care sector with doggy daycares*

*The pet care industry is largely unregulated, meaning anyone can set up a doggy daycare with no minimum experience or qualification requirements. The SPCA Certified Doggy Daycare standards provide a benchmark for the industry and help owners to understand what to look for. These include low dog-to-staff ratios, compatible playgroups and 100% supervision at all times. We welcomed our first member to these standards this year.

Standards are:

- Above the minimum level required in current codes of welfare
- Reviewed every three years
- Independently audited – both scheduled and unannounced
- Developed by the SPCA Science team with consideration for:
 - > Latest animal welfare science
 - > Current legislation
 - > Advice from veterinarians
 - > Pet care professionals
 - > Technical specialists
- Implemented following extensive industry consultation

Photo credit: The Grooming Lounge & Daycare, Whangarei



Raising the level of care for chickens

There are 175 standards within the SPCA Certified animal welfare standards for free range and barn raised meat chickens. Farmers raising meat chickens need to be compliant with these in order to achieve and keep their certification, over and above the Code of Welfare for meat chickens. As an example, SPCA Certified requires its members to provide chickens with platforms for perching, allowing them to express an inherent behaviour to roost and protect themselves from predators. Chickens are provided with increased space which allows them to exhibit normal behaviours like wing flapping, foraging and dust bathing.

Thank you to our members, third-party independent auditing team, SPCA Certified Team, partners and of course – consumers of the SPCA Certified products – for lifting the game for New Zealand’s animals this year. With every animal certification for farmed animals, we are rewriting their story, offering compassion to hundreds of thousands of lives, and transforming the landscape of animal welfare for the better.

Photo credit: Inghams Group



We welcomed:

- Woolworths (Countdown), our largest retail member, selling Countdown branded, “Macro” eggs and chicken
- Better Eggs, certifying their free range and barn layer hen farms
- Zeagold Nutrition, certifying one of their free range layer hen farms

We moved into the Pet Care Sector, welcoming our first Doggy Daycare facility

We launched SPCA Certified barn Standards for meat chickens



Educating our children

Children are key to helping secure a better future for animals in New Zealand. They are the animal guardians of tomorrow.



Since 2016, SPCA's Education Programme has been creating engaging and inspiring material to nurture the hearts and minds of children, by developing educational resources that fit into the New Zealand Curriculum and help teachers use animal welfare within their teaching.

The SPCA Education Programme offers a range of impactful tools to support children's understanding of and engagement in animal welfare. Through the dedicated website, children can access a variety of educational content, including interactive games, videos, and downloadable activity books. These tools are thoughtfully designed to teach kids about responsible pet care, empathy towards animals, and the importance of animal welfare.

The engaging content covers diverse topics, from understanding animal behaviors to learning how to create a safe and happy environment for pets. By providing an accessible and enjoyable platform, SPCA Education equips children with valuable knowledge and skills, nurturing a lifelong commitment to caring for animals with kindness and respect.

48% of all schools (5 - 12 years) have teachers registered to use our SPCA Teachers' Portal

SPCA's latest two series of storybooks for learners were translated into te reo Māori and provided free to every Māori medium education setting across Aotearoa (more than 300 schools receiving 21,960 copies)

Helping children to learn at home: our series of 'Learning at Home Booklets' provided a fun collection of animal-related learning activities for children to enjoy working through at home



Empowering young guardians: SPCA resources ignite learning

In a semi-rural primary school north of Auckland, the school's te ao Māori leader sought to incorporate the concept of kaitiakitanga (being a guardian/protector) into the students' learning. Using the SPCA's resources, the teacher found a seamless alignment with the school's values, fostering responsibility and compassion in students. Through play-based learning and classroom activities, young learners explored animal care and environmental stewardship. The SPCA's Teacher and Kid's Portals, along with instructional readers, enriched the curriculum and were shared school-wide, with noticeable growth in students' understanding of the role of SPCA and how to care for animals. Through the use of SPCA resources, students developed a profound appreciation for the role of kaitiakitanga, nurturing a sense of responsibility towards animals and their well-being.

SPCA Rescue

The TV show 'SPCA Rescue' aired 10 episodes from February this year on TVNZ1 and presented an extraordinary opportunity to showcase the remarkable dedication and tireless efforts of SPCA Inspectors, Ambulance and Centre staff.

This captivating series provided a platform to shed light on the often unseen and heroic work carried out by these individuals, as they diligently rescued and cared for animals in need.

By documenting their day-to-day challenges, heartwarming rescues, and the countless lives they touched, 'SPCA Rescue' captured the true essence of SPCA's mission. This show not only celebrated the unwavering commitment of these compassionate professionals, but also shone a light on our Inspectorate limitations when it comes to the law. The Inspectorate is the only arm of SPCA receiving any Government contribution and their remarkable work protects and seeks justice for animals every day.



A Group Effort

Addressing animal welfare in New Zealand is an ongoing challenge, often overwhelming due to the multifaceted causes contributing to overpopulation and suffering.

SPCA's commitment to animal welfare drives collaborative efforts with various agencies, including local councils, national welfare bodies, Government entities, and rescue groups. We acknowledge and appreciate the valuable work done by rescues in rehabilitating and rehoming animals – and adding to the much-needed animal voice demanding change. However, as a law enforcement agency under the Animal Welfare Act 1999, our role differs significantly from theirs. While sharing a goal of a better future for animals, our legal obligations shape our actions, including confidential investigative work due to legal and privacy constraints.

We strive to support rescue groups through grants, desexing initiatives, and shared advocacy, recognising that both our roles contribute to a compassionate society. We are proud of our contributions and hope for continued collaboration, building on shared goals while respecting our differences. Together, as a community, we can combat animal cruelty and pave the way for a brighter future for our cherished animal companions.



04
What makes it all possible



Photo credit: Susan Wall Photography



Op Shops

We are proud to highlight the important role our Op Shops played in our mission to support and protect animals in need.

These vibrant and community-driven stores have proven to be more than just a source of funds; they have become a cornerstone of our ongoing financial support. They enable many people to give in kind, recycling clothing and other items that they no longer have use for, while providing a delightful shopping experience for others – all with the important cause of helping SPCA’s animals. With a growing awareness of the importance of sustainable solutions and a desire to contribute to meaningful causes, our Op Shops have captured the hearts of countless individuals who are passionate about supporting animal welfare.

SPCA’s commitment to expansion and optimisation of our Op Shop network continued to flourish in the past year. We proudly opened 23 new op shops, bringing the total count to an impressive 76 shops nationwide, spanning from Kaitaia to Invercargill.

In the face of traditional fundraising challenges and economic uncertainties, our Op Shops have enabled greater certainty, becoming integral to our fundraising efforts and enabling us to carry out our vital work with unflinching dedication.

At the heart of this success is our focus on a positive customer experience within our stores. We have prioritised improving service standards and enhancing visual merchandising, providing a delightful shopping experience and encouraging even more people to choose our SPCA Op Shops as their preferred destination for sustainable shopping.

Through the determined efforts of our dedicated staff, volunteers, and donors, these shops have blossomed into havens for treasure seekers and conscious consumers alike. We extend our deepest gratitude to our community of supporters – those giving the items that we can sell through SPCA Op Shops and those committed to shopping with a purpose. You have made an immeasurable difference in the lives of countless animals.

The impact of the fundraising from Op Shops is growing each year. In the past year the shops have contributed to more than \$2.7 million of funds that go directly to meeting the costs of supporting the animals.



Dedicated donors

We extend our heartfelt gratitude and appreciation to our invaluable donors, whose enduring support has made the critical work for animals possible throughout the year.

With your contributions we have been able to rescue, rehabilitate, and provide a second chance to countless animals in need. Your donations have empowered us to respond swiftly and effectively in times of natural disasters, having an immediate impact on so many vulnerable lives. They have also allowed us to invest in a better future for the animals; conducting educational programs, advocating for stronger animal welfare

laws and educating people within communities on responsible pet ownership.

From the bottom of our hearts, thank you for being the driving force behind our mission and standing with us in our commitment to creating a world where all animals are treated with the compassion and care they truly deserve.



September each year is an opportunity to highlight a very special group of people - our SPCA Giving Hearts members.

These are compassionate animal lovers who have made the incredible act of kindness of leaving a gift in their Will to SPCA. Like Andi Cossar, whose love of animals will continue to make a positive impact for many years to come. Andi has been involved with SPCA's work for more than 25 years. As an SPCA Giving Hearts member, Andi has made the generous decision to leave a gift in her Will to SPCA. We asked what prompted her to make this commitment:

"I want the excellent work saving animals to continue, giving them their best chance at life, and to help prevent needless suffering. It's the least I can do to help ensure this work continues long after I've left the planet. These are caring, sentient beings that need our help and support. We, as humans, owe it to them."

Government contribution

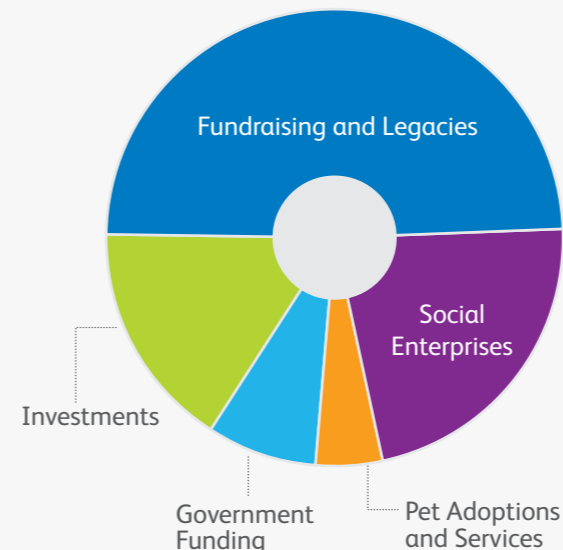
The operational budget of SPCA amounts to around \$65 million annually, with approximately 10% of this total covered through government contributions to support the Inspectorate Services.

SPCA is the only charity with the legal powers to investigate cruelty and bring offenders to justice, so the Government's allocation is solely directed towards this compliance arm of our organisation and represents approximately 40% of the cost to run the Inspectorate.

With 90% of our funding dependent on funds that we raise, our organisation's remarkable 150-plus years of service have been made possible through the collective compassion and commitment of our communities.

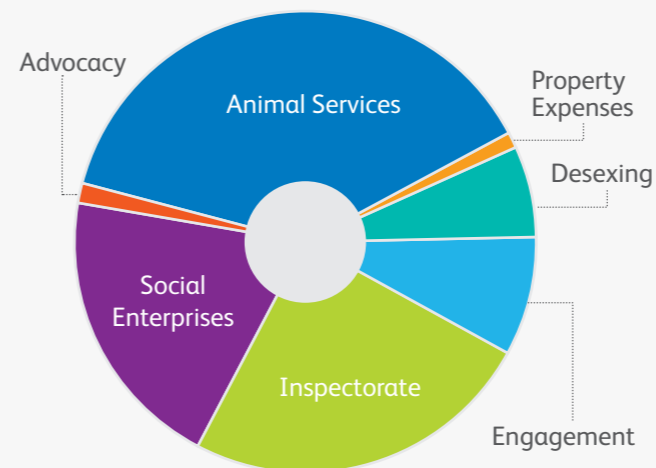
Income

Where do we get our money from?



Operating Expenses

Where do we spend our money?



Finance Summary for Period Ended 30 June 2023



Grant funders & trusts

In 2022-23 the following grant funders, charitable estates and trusts have generously supported SPCA. We would like to acknowledge and thank these organisations for helping make our work possible throughout the year.

- | | | |
|---|--|---|
| Air Rescue Services Limited | Grumitt Sisters Community Trust, managed by Perpetual Guardian | Room-Simmonds Charitable Trust, managed by Perpetual Guardian |
| Alexandra Harold Watson Charitable Trust, managed by Perpetual Guardian | Hamilton City Council | Rotorua Trust |
| Aotearoa Gaming Trust | Hilda Curtis Charitable Trust, managed by Public Trust | Simplicity Foundation |
| Auckland City Council | Joyce Fisher Charitable Trust | South Wairarapa District Council |
| Brian Whiteacre Charitable Trust, managed by Public Trust | Lake Memorial Charitable Trust, managed by Perpetual Guardian | The Lion Foundation |
| Carterton District Council | Lindsay Foundation | The Reed Charitable Trust, managed by Public Trust |
| Christchurch Casinos Charitable Community Trust | Lottery Minister's Discretionary Fund | The Sunrise Foundation |
| Companion Animals NZ Trust | Mainland Foundation | Toi Foundation |
| Eastern and Central Community Trust | Margaret Olive Russell Charitable Trust, managed by Perpetual Guardian | Trillian Trust |
| Elaine Gurr Endowment Trust, managed by Perpetual Guardian | Masterton District Council | Trust Horizon |
| Gladys Howey Charitable Trust, managed by Perpetual Guardian | Matheson Animal Trust, managed by Public Trust | West Coast Community Foundation |
| Grey District Council | Palmerston North District Council | Whakatane District Council |
| Greymouth Corrections Department | Pelorus Trust | Whangarei District Council |
| | | William Downie Stewart Charitable Trust |
| | | Zelda Roberts Charitable Trust, managed by Public Trust |



OUR THANKS for special support this year

- Dog Protection Society
- Gattung Foundation
- Giltrap Group
- Pauline Lyne for her lifetime of support and the North Shore Supporters group (who closed this year after 30 years)
- Waikato Animal Welfare Foundation
- Walter and Adrienne Titchener Foundation



Partners and Sponsors

We work with incredibly generous and creative businesses who choose to support SPCA in countless ways. They stand by us - from raising awareness, supporting our team, and generously funding the work of SPCA.



Nestlé Purina believe pets and people are better together and are committed to helping SPCA with animal care and welfare. That care starts with the right nutrition, and this is why the cats and dogs of SPCA are fed the premium nutrition of Purina ONE. Over 100,000kg of pet food is donated by Purina each year to SPCA, to ensure the animals in our care are kept happy and healthy.



SPCA Pet Insurance are committed to helping build a stronger bond with your cat or dog. They believe every animal is exceptional and needs to be appreciated for who they are. With SPCA Pet Insurance, you can say yes to your cat or dog's next adventure, without worrying about what a trip to the veterinary might cost you, knowing you may be reimbursed a portion of eligible veterinary bills. By purchasing a policy, you're helping support the great work of SPCA! SPCA Pet Insurance is distributed by Greenstone Financial Services NZ Limited.



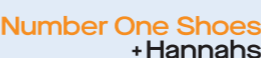
Pet Depot is an online pet supplies store and SPCA's official retail partner with 30 percent of all profits going directly to SPCA. All food, treatments and supplies stocked by Pet Depot, can be delivered straight to your door. Funds received will help SPCA to rescue, shelter and rehome injured, abandoned and abused animals; provide medical treatment, as well as vaccinations, microchips and desexing services.



MinterEllisonRuddWatts is a leading full-service law firm and continues to proudly support SPCA by providing subsidised legal advice. Through their Community Investment Programme (CPI) they support grassroots and community organisations of Aotearoa New Zealand. The team believes that by using collective skills, time and resources they are able to make a positive impact for people, communities and our planet.



Ezeco makes donations from every Ezeleash purchase made in-store and through their website. An Ezeleash is a dog lead with an integrated hand sanitiser spray, an easily accessible dog poop bag dispenser, utility pocket and quick tether point. Designed to make your life easier.



Number One Shoes & Hannahs are putting their best foot forward to help the vulnerable animals here at SPCA. Both offer some of New Zealand's most iconic footwear brands, including Hush Puppies. To help animals in need, Number One Shoes & Hannahs donate sample shoes and end-of-line footwear to our SPCA Op Shops across the country and will be using their large store network to raise funds for SPCA throughout the coming year.



Legacies

In support of SPCA

We would like to recognise the kindness of the following people from whom SPCA generously received a gift left in their Will in 2022-23. These gifts will make a difference to New Zealand's animals for generations to come.



Adrienne Hart	Christine Hanson	Elaine Jenkins	Gwendolyn Rowe
Albert Kerr	Clayton Dornbusch	Elaine Whiting	Gweneth Hart
Allen Smith	Colin Armishaw	Elizabeth Culav	Gwenyth Morris
Anne Williams	Colin Fraser	Elizabeth Laking	Harold Drage
Audrey MacIlwaine	Colleen House	Elizabeth Packman	Hazel Steiner
Barbara Flude	Colleen Milburn	Elizabeth Parton	Heather Boyd
Barbara Morris	Constance Blows	Elsie Morris	Helen Bigger
Barbara Shadbolt	Cynthia Gilchrist	Elva McNamara	Helen Taylor
Barrie Maxwell	David Smith	Erica Anderson	Henry van Dijk
Barrie Salvanda	David Swain	Erika de Atzel	Iris Rowe
Barta Davis	Dawn Miller	Frances Petricevic	Isabel Alison
Beverley Booth	Denis Bounsall	Garry Bell	Ivy Godsiff
Beverley Palmer	Dennis Duffield	Garth Carpenter	Ivy Morgan
Beverley Peters	Dennis Thornton	Gary Coombs	Jacqueline Watson
Beverley Wright	Diane Cann	Geoffrey Newnham	James Holmes
Bruce Culpan	Diane Leary	George Vincent	James Milburn
Catherine McCarthy	Diann Harper	Gerilda Tobler	Jan Jamieson
Charles King	Donald Duke	Gillian Rayner	Jean Lean
Charles Smith	Doreen Hazelton	Gordon Tomlins	Jean O'Neil
Chris Redmore	Dorothy Dyson	Graeme Culling	Jean Rose
Christina Stanton	Dympna Saul	Gretta Beck	Jean Tetly
Christine Clement	Eileen Duthie	Gwendolen Hamilton	Jean Walker

Jean-Clare Harper	Leonard Frontin-Rollet	Melvin Farrington	Robert McKinley
Jeffrey Leach	Leonard Wood	Michael Ferns	Rodney Blair
Jennifer Leatham	Leslie Fry	Michael Harris	Roger Lloyd
Jennifer Simpson	Lewis Burns	Michael Hughes	Roland Stead
Jessie Grant	Lillian Carr	Mollie Gower	Ronald Bennett
Jill Horlor	Lillian Clare	Montagne Johnson	Rosemary O'Connell
Joan Morrow	Lucy Snelgar	Murray Rider	Rosemary Clarke
Johannes van Haarskamp	Lyndsay Maunsell	Murray Watson	Rosemary Smith
John Alldred	Lyndsay Stone	Myrtle Pedley	Roy Hills
John Clews	Lynette Ayres	Nellie Burnet	Ruth Tomlin
John Harding	Lynley Lackner	Ngairé Edmonds	Sheila Fooks
John Wakefield	Madge Johnston	Ngairé Mann	Sheryl Summers
John Walsh	Maisie Bucknall	Norma Cameron	Shirley Crane
Joyce Jarvis	Malcolm Bridge	Olwyn Rae	Shirley Suckling
Judith Barker	Margaret Copperwheat	Owen Davis	Soon Kim Rout
Julia Crouch	Margaret Hollingworth	Pamela Andrews	Stella Jones
Julie Gilmore	Margaret Stiffe	Pamela Bowers	Susan Davies
Justine Johnston	Margaret Suthrell	Patricia Gordon	Susan Branch
Karen Bates	Margaret Williams	Patricia Lovelady	Suzanne Hall
Karin Clyne	Margery Turner	Patricia Whyte	Titia Praamstra
Kathleen Bergh	Marilyn Dempster	Pauline Fowler	Valerie Lambeth
Kathleen McSherry	Marion Morgan	Pearl Gibson	Valerie Sirett
Kay Tall	Marion Sparks	Perry Styles	Violet Chattington
Keith Malcolm	Martin Armstrong	Peter Dobbie	Vivienne Quigley
Kelvin Brown	Mary Cooper	Peter Ireland	Wendy Lowry
Kenneth Deakin	Mary Loughnan	Ralph Tait	Wendy Spencer
Kevin Sammons	Mary Murphy	Ralph Taylor	William Phillips
Laimdota Briedis	Mary Rumsey	Reginald Hawkins	Yvonne Wood
Leigh Langridge	Mary Tanner	Richard Dench	
Leigh Pope	Maureen Littin	Richard Johnson	

05 Behind us all the way



Our people

At the heart of SPCA, our staff continue to demonstrate an unyielding commitment to animals that's nothing short of remarkable.

Every day they are confronted with challenging and often heartbreaking situations, yet they approach these with unwavering resolve and empathy.

Approximately 700 dedicated individuals span the country in various roles, each contributing their unique skills towards our common goals. From the frontlines of animals in our care, to the insights they bring to animal welfare science, our staff embody a shared commitment to our mission. Through their unwavering dedication, they transform compassion into action and are the backbone of SPCA's mission and a beacon of hope for animals in need.



Ritchie Dawson's three decades of dedication

Ritchie Dawson's commitment to animal welfare has spanned over 33 years as an SPCA Inspector. A true advocate, he's extended his compassion beyond work, fostering and adopting countless animals himself. Throughout his tenure, Ritchie has answered numerous calls for help, investigated countless complaints, and been a pivotal figure in bringing offenders to justice.

With a wealth of historical knowledge, Ritchie has seen his fair share of change – but one moment really stands out from the rest: “The biggest change for me was when we became ‘One SPCA’ nationally. This enabled us to spread our resources equally, because geographical location should not impact animal welfare. This was a strategic step for us to better protect animals across New Zealand.”

As an Inspector, Ritchie faces adversity head-on. Amidst potential confrontations and verbal abuse, he maintains his composure and focuses on the well-being of the animals. His proudest

moments stem from collaborating with dedicated colleagues who share his mission.

Ritchie shows no signs of slowing down either, as he absolutely loves his job and finds it very hard to pick a stand-out memory from his career: “One moment really stays with me. We were called to seize four neglected puppies, and unfortunately three didn't make it... but miraculously one survived. We named him Bandit. Recently I was reunited with Bandit and he was so happy to see me – his little tail wagging frantically! Bandit was so close to death and now he's thriving. It's so rewarding to see the difference we can make.”

When asked for advice to pet owners, Ritchie emphasises treating animals like family, acknowledging their unwavering selflessness. Practical steps like desexing and microchipping are top of mind for him to address animal overpopulation and reduce the unwanted animals now and into the future. **The animals are forever thankful to you, Ritchie!**

Our volunteers

Our volunteers are a vital part of our team. SPCA simply could not function without these people who selflessly give their time and skills to help the animals.

Their diverse range of talents and passions have allowed us to achieve the best possible outcomes for the animals, time and time again. Whether it's walking animals, painstakingly tending to their individual needs, or providing them with a safe and nurturing home, our volunteers are the pillars of support for our furry friends. From the smallest acts of kindness, to the profound love and care shown to our animals, every volunteer has played an indispensable role in our organisation.



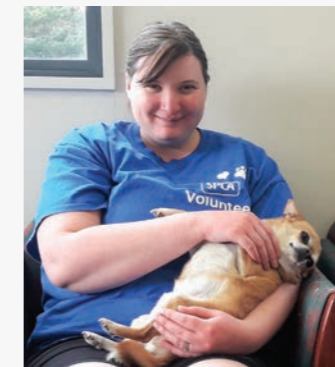
Beyond animal care, our volunteers have been instrumental in running our thriving Op Shops. Here, they have showcased their talents in retail, customer service, and creative displays. Their dedication to promoting sustainable and recycled solutions through thrift shopping has not only raised crucial funds, but also raised awareness about responsible consumerism.

Our gratitude extends to those who have generously offered their professional services free of charge, such as photography. This has enabled us to capture the true essence of our organisation and the animals we serve, giving them a voice through striking visuals.

To all our volunteers, we thank you from the bottom of our hearts. Your selfless contributions have made a profound difference in the lives of countless animals, providing them with the love, care, and second chances they so desperately deserve. Thank you for being the backbone of our organisation – together we are building a brighter future for the animals.



Special thanks



The Wellington Centre's Dog Squad truly is a team of superheroes – and well deserving of their 2023 'Sensational Centre Team' accolade in our National Volunteer Awards.

Together, they organise a monthly collection at our local supermarket and farmers' market. In addition to that, they do weekly waterfront puppy walk with the Centre puppies, which are crucial for their socialisation. These champion volunteers represent the SPCA in the community, fundraise, and interact frequently with the public. They do this all while helping our puppies prepare for life outside of the Centre. This is of course in addition to their individual weekly volunteer shifts. The Dog Squad is both adored and respected by everyone who adopted a puppy in Wellington. This group of volunteers brightens the lives of the puppies and the community around them. Thank you to Jill Wilson, Kirsty Boyd, Julia Maiden, Sue Diggle, Meegan Walker for being there for our animals!

06
SPCA
Annual
Snapshot



Highlights from another year making a difference for the animals



Advocate

- 45** Submissions to Government, local authorities and industry bodies
- 14** Expert and informal opinions written for cruelty investigations
- 149** Stakeholder meetings attended to advocate and advance animal welfare
- 21** Involvements in advisory groups and committees

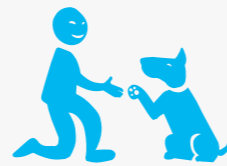


SPCA Certified

- 25 million** Number of animals lives improved (per annum)
- 274** Certified facilities audited

Protect & Seek Justice

- 13,439** Cruelty complaints received
- 54** Prosecution charges filed in court
- 3,250** Verbal advice and assistance
- 1,920** Involved warnings and education letters
- 7,760** Ambulance jobs recorded
- 313** Animal rescue jobs
- 3,900** Animals brought into SPCA care by Inspectors
- 20** Species of animals at jobs attended – ranging from alpacas to reptiles



Desexing

- 33,394** Total animals desexed across all programmes
- 16,538** Animals desexed in SPCA Centres (12,013 externally audited and 4,525 more within our records)
- 16,856** Animals desexed through our National Desexing Programme, including Snip 'n' Chip, community desexing and grants

National Desexing Programme breakdown:

- 2,469** Animals desexed as part of our SPCA Desexing Grant work – gifted to animal rescue groups
- 8,252** Snip 'n' Chip vouchers redeemed (18,355 Snip 'n' Chip vouchers issued in total)
- 6,135** Desexed through our Community Desexing and other desexing activities
- 120,000** Estimated unwanted animals birth's prevented



Educate

- 21,960** Books gifted to schools
- 1,113** Schools using the SPCA Teachers' Portal
- 42,361** Kids' Portal session
- 5,200** Educational videos created for 15 animal species
- 1,132** Downloads of our Kind Matters Newsletter



Rescue, Rehabilitate and Rehome

- 33,057** Total animals cared for
- 16,307** Animals adopted
- 42%** Of our animals were in foster care each month





**Together, we can
give them a better life.**